



COOLPIX® S700

At the heart of the image™



COOLPIX® STYLE

brilliance made beautiful

12.1
Effective
Megapixels

3X
Optical
Zoom-Nikkor
Glass Lens

2.7"
Incredible,
Bright LCD
Screen

VR
Optical
Image
Stabilization

3200
ISO
Capability

Stylish elegance meets
high resolution performance.



Key Features

12.1 Megapixels for stunning prints as large as 20 x 30 inches

3x Optical Zoom-Nikkor Glass Lens – Nikkor optics provide exceptional pictures

VR Optical Image Stabilization minimizes the effect of camera shake

Incredible, Bright 2.7-inch High Resolution LCD makes it easy to compose and share your pictures

All New Stylish, All Metal Design slips right into your shirt pocket or purse!

Quick Response – power up within 0.9 seconds and shutter delay of only .005 second!

Auto adjusts up to ISO 3200 – keep shooting, even in low light

In-Camera Red-Eye Fix™ automatically fixes most instances of red-eye in the camera. You may never see red-eye again

Face-Priority AF – Nikon's face-finding technology that automatically focuses on up to 12 faces

D-Lighting rescues dark or backlit images by improving brightness and detail where needed

COOLPIX. STYLE

VR Optical Image Stabilization



without vibration reduction



with vibration reduction

Nikon's VR Optical Image Stabilization system compensates for camera shake to produce clearer, sharper results in lower light or unsteady conditions. Active full time, VR's stabilizing effects also aid in smooth, easy framing and shooting.



VR image stabilization

Quality compact stainless steel body



From the solid feel and comfortable wraparound grip of its ultra compact all metal body to its large, easy-access control buttons and 2.7-inch high-resolution LCD monitor, the COOLPIX S700 is a joy to carry and to take pictures with.

Smallest and Fastest in Its Class*

All functions are optimized for immediate response, freeing you to capture special moments as you experience them. The COOLPIX S700 powers up within 0.9 seconds, and the shutter releases in 0.005 seconds.

*Among 12mp cameras as of August 2007

ISO 3200 Capability



Better pictures in lower light

Light sensitivity range up to ISO 3200* with manual control or auto control (up to ISO 1000) creates new opportunities to take sharper, more natural looking photos in lower lighting conditions, or to capture fast-moving subjects with outstanding clarity.

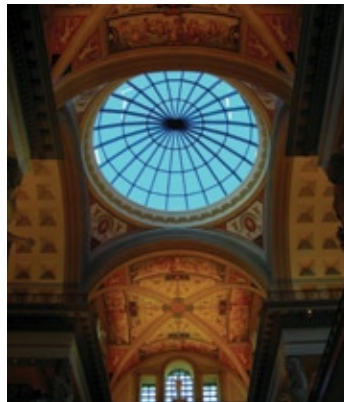
*ISO 3200 is available only for image sizes of 5mp or smaller

Nikon In-Camera Innovations Makes taking great pictures easy!



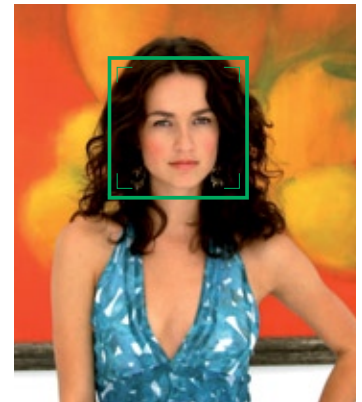
In-Camera Red-EyeFix™

This in-camera feature automatically fixes most typical occurrences of red-eye.



D-Lighting

Compensates for underexposed images or insufficient flash by automatically adding light and detail to selected shots where needed, without affecting properly exposed areas.



Face-Priority AF

Automatically finds and focuses on up to 12 faces to ensure superb portraits with clear, crisp focus.



Simply better portraits

COOLPIX S700

Digital Camera Specifications



Simply better portraits



VR image stabilization



Better pictures in lower light

| | |
|-------------------------------------|--|
| Effective pixels: | 12.1 million |
| Image sensor: | 1/1.72-in. CCD; total pixels: approx. 12.43 million |
| Lens: | 3x Zoom-NIKKOR; 7.9-23.7mm (35mm [135] format picture angle: 37-111mm); f/2.8-5.4; 7 elements in 5 groups; Digital zoom: up to 4x (35mm [135] format picture angle: 444mm) |
| Focus range: (from lens) | 50cm (1 ft. 7.7 in.) to infinity (∞), Macro close-up mode: 6cm (2.4 in.) to infinity (∞) |
| Monitor: | 2.7-in., 230,000-dot, wide viewing angle TFT LCD with reflection coating |
| Storage media: | Internal memory (approx. 52MB), SD/SDHC memory card compatible |
| Image size: (pixels) | 4000 x 3000(12M), 3264 x 2448 (8M), 2592 x 1944 (5M), 2048 x 1536 (3M), 1024x768 PC, 640x480 TV, 3968 x 2232 (16:9) |
| Vibration Reduction: (VR) | VR Optical Image Stabilization |
| ISO sensitivity: | ISO 64, 100, 200, 400, 800, 1600, 2000, 3200, Auto (auto gain ISO 64-1000) |
| Interface: | USB |
| Power sources: | Rechargeable Li-ion Battery EN-EL10 (supplied), AC Adapter EH-62D (optional) |
| Battery life: | Approx. 150 shots with EN-EL10 battery (based on CIPA standard) |
| Dimensions: (WxHxD) | Approx. 89 x 54 x 23 mm (3.5 x 2.1 x 0.9 in.) excluding projections |
| Weight: | Approx. 130 g (4.6 oz.) without battery and SD memory card |
| Supplied accessories*: | AV/USB Cable UC-E12, Rechargeable Li-ion Battery EN-EL10, Battery Charger MH-63, Strap AN-CP14, Dock Insert PV-17, COOLPIX Software Suite CD-ROM |
| Optional accessories: | AC Adapter EH-62D |

*Supplied accessories may differ by country or area.

System Requirements:

OS **Macintosh:** Mac OS X version 10.3.9, 10.4.x
Windows: Windows Vista (32bit), Windows XP Home Edition/Professional pre-installed models

Note: CD-ROM drive required for installation. Only built-in USB ports are supported

Microsoft®, Windows® and Windows Vista™ are either registered trademarks or trademarks of Microsoft Corporation in the United States and/or other countries. Macintosh®, Mac® OS and QuickTime® are either registered trademarks or trademarks of Apple Inc. in the United States and/or other countries. The SDHC logo is a trademark. ImageLink and ImageLink print system logo are trademarks of Eastman Kodak Company. PictBridge is a trademark. D-Lighting technology is provided by Apical Limited. The FotoNation logo is a trademark. The FotoConnect logo is a trademark. Products and brand names are trademarks or registered trademarks of their respective companies.

Specifications and equipment are subject to change without any notice or obligation on the part of the manufacturer. August 2007 ©2007 NIKON INC.



Nikon Inc.,
1300 Walt Whitman Road, Melville, N.Y. 11747-3064 nikonusa.com / 1800-Nikon-UX