

DSLR STILL IMAGES FEATURES GUIDE

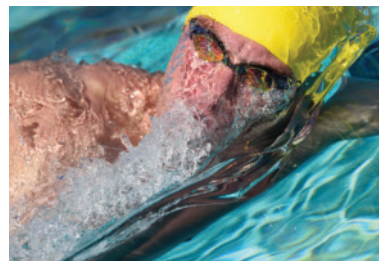
PERFORMANCE TO IGNITE YOUR PASSION



At the heart of the *image*™



I AM FULL OF POSSIBILITIES



NIKON DSLR STILL IMAGES FEATURES GUIDE

AT-A-GLANCE



	D4S	D810	Df	D750	D610	D7200	D7100	D5500	D5300	D3300	D3200
RESOLUTION											
Sensor Resolution	16.2MP CMOS	36.3MP CMOS No OLPF	16.2MP CMOS	24.3MP CMOS	24.3MP CMOS	24.2MP CMOS No OLPF	24.1MP CMOS No OLPF	24.2MP CMOS No OLPF	24.2MP CMOS No OLPF	24.2MP CMOS No OLPF	24.2MP CMOS
IMAGE PROCESSING											
Processor	EXPEED 4	EXPEED 4	EXPEED 3	EXPEED 4	EXPEED 3	EXPEED 4	EXPEED 3	EXPEED 4	EXPEED 4	EXPEED 4	EXPEED 3
ISO RANGE											
Standard and Extended Range	100-25,600 (50-409,600)	64-12,800 (32-51,200)	100-12,800 (204,800)	100-12,800 (50-51,200)	100-6,400 (25,600)	100-25,600 (102,400)	100-6,400 (25,600)	100-25,600	100-12,800 (25,600)	100-12,800 (25,600)	100-6,400 (12,800)
METERING SYSTEM											
	3D Color Matrix III using 91k-Pixel RGB Sensor Center Weighted Spot	3D Color Matrix III using 91k-Pixel RGB Sensor Center Weighted Spot Highlight Weighted	3D Color Matrix II using 2,016-Pixel RGB Sensor Center Weighted Spot	3D Color Matrix III using 91k-Pixel RGB Sensor Center Weighted Spot Highlight Weighted	3D Color Matrix II using 2,016-Pixel RGB Sensor Center Weighted Spot	3D Color Matrix II using 2,016-Pixel RGB Sensor Center Weighted Spot	3D Color Matrix II using 2,016-Pixel RGB Sensor Center Weighted Spot	3D Color Matrix II using 2,016-Pixel RGB Sensor Center Weighted Spot	3D Color Matrix II using 2,016-Pixel RGB Sensor Center Weighted Spot	3D Color Matrix II using 420-Pixel RGB Sensor Center Weighted Spot	3D Color Matrix II using 420-Pixel RGB Sensor Center Weighted Spot
TIFF (Small, Medium, Large)	✓	✓	✓	–	–	–	–	–	–	–	–
JPEG Fine (Small, Medium, Large)	✓	✓	✓	✓	✓	✓	✓	✓	✓	✓	✓
JPEG Basic (Small, Medium, Large)	✓	✓	✓	✓	✓	✓	✓	✓	✓	✓	✓
JPEG Normal (Small, Medium, Large)	✓	✓	✓	✓	✓	✓	✓	✓	✓	✓	✓
CARD SLOT/STORAGE MEDIA											
	CF + XQD	CF + SD	SD	SD + SD	SD + SD	SD + SD	SD + SD	SD	SD	SD	SD
DIMENSIONS											
	6.3 in. (160 mm) x 6.2 in. (156.5 mm) x 3.6 in. (90.5 mm)	5.8 in. (146 mm) x 4.9 in. (123 mm) x 3.3 in. (81.5 mm)	5.6 in. (143.5 mm) x 4.3 in. (110 mm) x 2.6 in. (66.5 mm)	5.6 in. (140.5 mm) x 4.5 in. (113 mm) x 3.1 in. (78 mm)	5.6 in. (141 mm) x 4.4 in. (113 mm) x 3.2 in. (82 mm)	5.3 in. (135.5 mm) x 4.2 in. (106.5 mm) x 3.0 in. (76 mm)	5.3 in. (135.5 mm) x 4.2 in. (106.5 mm) x 3.0 in. (76 mm)	4.8 in. (124mm) x 3.8 in. (97mm) x 2.7 in. (70 mm)	4.92 in. (125 mm) x 3.9 in. (98.0 mm) x 3.0 in. (76.0 mm)	4.9 in. (124 mm) x 3.9 in. (98 mm) x 3.0 in. (75.5 mm)	5.0 in. (125 mm) x 3.8 in. (96 mm) x 3.1 in. (75.5 mm)
WEIGHT											
	41.6 oz. (1180 g) camera body only	31.1 oz. (880 g) camera body only	25 oz. (710 g) camera body only	26.5 oz. (750 g) camera body only	26.8 oz. (760 g) camera body only	23.8 oz. (675 g) camera body only	23.8 oz. (675 g) camera body only	14.81 oz. (420g) camera body only	16.9 oz. (480 g) camera body only	14.5 oz. (410 g) camera body only	16 oz. (455 g) camera body only



NIKON DSLR STILL IMAGES FEATURES GUIDE

AT-A-GLANCE



D4S D810 Df D750 D610 D7200 D7100 D5500 D5300 D3300 D3200

LCD SCREEN

	3.2 inch 921K-Dot LCD Screen with RGBW	3.2 inch 1,229K-Dot LCD Screen with RGBW	3.2 inch 921K-Dot LCD Screen	3.2 inch 1,229K-Dot Tilting LCD Screen with RGBW	3.2 inch 921K-Dot LCD Screen	3.2 inch 1,229K-Dot LCD Screen with RGBW	3.2 inch 1,229K-Dot LCD Screen with RGBW	3.2 inch 1,037K-Dot Touch Vari-angle LCD Screen	3.2 inch 1,037K-Dot Vari-angle LCD Screen	3.0 inch 921K-Dot LCD Screen	3.0 inch 921K-Dot LCD
--	--	--	------------------------------	--	------------------------------	--	--	---	---	------------------------------	-----------------------

TOP CONTINUOUS SHOOTING SPEED AT FULL RESOLUTION

	11.0 frames per second	5.0 frames per second	5.5 frames per second	6.5 frames per second	6.0 frames per second	6.0 frames per second	6.0 frames per second	5.0 frames per second	5.0 frames per second	5.0 frames per second	4.0 frames per second
--	------------------------	-----------------------	-----------------------	-----------------------	-----------------------	-----------------------	-----------------------	-----------------------	-----------------------	-----------------------	-----------------------

FILE FORMATS

NEF (RAW) 12/14-bit Uncompressed	✓	✓	–	–	–	–	–	–	–	–	–
NEF (RAW) 12/14-bit Lossless Compressed	✓	✓	✓	✓	✓	✓	✓	–	–	–	–
NEF (RAW) 12/14-bit Compressed	–	–	–	–	–	–	–	✓	✓	–	–
NEF (RAW) 12-bit Compressed	–	–	–	–	–	–	–	–	–	✓	✓
RAW SIZE S	✓	✓	–	–	–	–	–	–	–	–	–

SCENE RECOGNITION SYSTEM

	Advanced Scene Recognition System	Advanced Scene Recognition System	Scene Recognition System	Advanced Scene Recognition System	Scene Recognition System	Scene Recognition System	Scene Recognition System	Scene Recognition System	Scene Recognition System	Scene Recognition System	Scene Recognition System
--	-----------------------------------	-----------------------------------	--------------------------	-----------------------------------	--------------------------	--------------------------	--------------------------	--------------------------	--------------------------	--------------------------	--------------------------

EXPOSURE COMPENSATION

	±5 EV in 1/3, 1/2 or 1 EV	±5 EV in 1/3, 1/2 or 1 EV	±3 EV in 1/3 EV	±5 EV in 1/3, 1/2 or 1 EV	±5 EV in 1/3, 1/2 or 1 EV	±5 EV in 1/3 or 1/2 EV	±5 EV in 1/3 or 1/2 EV	±5 EV in 1/3 or 1/2 EV	±5 EV in 1/3 or 1/2 EV	±5 EV in increments of 1/3 EV	±5 EV in increments of 1/3 EV
--	---------------------------	---------------------------	-----------------	---------------------------	---------------------------	------------------------	------------------------	------------------------	------------------------	-------------------------------	-------------------------------

AUTO EXPOSURE BRACKETING

	2 to 9 frames in steps of 1/3, 1/2, 2/3 or 1 EV	2 to 9 frames in steps of 1/3, 1/2, 2/3 or 1 EV	2 to 5 frames in steps of 1/3, 2/3, 1, 2, or 3 EV	2 to 9 frames in steps of 1/3, 1/2, 2/3 or 1 EV	2 to 3 frames in steps of 1/3, 1/2, 2/3, 1 or 2 EV	2 to 9 frames in steps of 1/3, 1/2 or 1 EV	2 to 5 frames in steps of 1/3, 1/2, 2/3, 1, 2, or 3 EV	3 frames in steps of 1/3 or 1/2 EV	3 frames in steps of 1/3 or 1/2 EV	–	–
--	---	---	---	---	--	--	--	------------------------------------	------------------------------------	---	---

TOP SHUTTER SPEED RANGE

30 seconds to 1/8000 sec	✓	✓	–	–	–	✓	✓	–	–	–	–
30 seconds to 1/4000 sec	–	–	✓	✓	✓	–	–	✓	✓	✓	✓

FLASH

Built-in Flash	–	✓	–	✓	✓	✓	✓	✓	✓	✓	✓
X = 1/250 sec	✓	✓	–	–	–	✓	✓	–	–	–	–
X = 1/200 sec	–	–	✓	✓	✓	–	–	✓	✓	✓	✓
Built-In Flash Commander Mode	–	✓	–	✓	✓	✓	✓	–	–	–	–
Rear/Slow Sync	✓	✓	✓	✓	✓	✓	✓	✓	✓	✓	✓
Built-In Flash Compensation	–	✓	–	✓	✓	✓	✓	✓	✓	✓	✓
Flash Bracketing	✓	✓	✓	✓	✓	✓	✓	–	–	–	–
Auto FP High Speed Sync to 1/8000 sec	✓	✓	–	–	–	✓	✓	–	–	–	–
Auto FP High Speed Sync to 1/4000 sec	–	–	✓	✓	✓	–	–	–	–	–	–



DOES YOUR DSLR CONNECT?

SEND IMAGES DIRECTLY TO YOUR COMPATIBLE SMARTPHONE!

Beginner or pro, you'll find Wi-Fi connectivity available throughout our entire DSLR lineup.

Nikon
snapbridge:)))

Connect your camera and your compatible Smart Device wirelessly — in a snap!

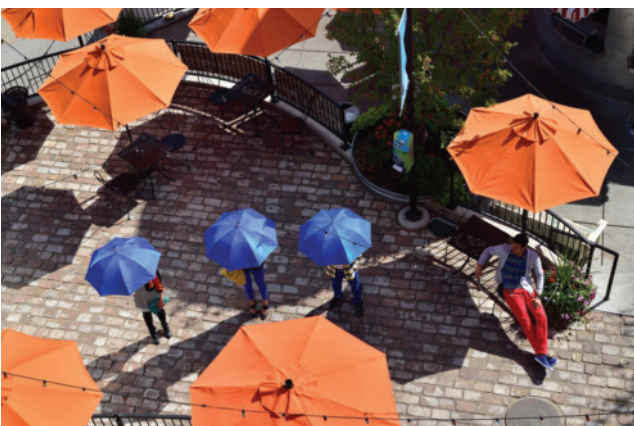


CONNECTIVITY

	D4S	D810	Df	D750	D610	D7200	D7100	D5500	D5300	D3300	D3200
Built-in Wi-Fi	–	–	–	✓	–	✓	–	✓	✓	–	–
Built-in NFC	–	–	–	–	–	✓	–	–	–	–	–
Wi-Fi Accessory	WT-5A	WT-5A/UT-1	WU-1a	WT-5A/UT-1	WU-1b	WT-5A/UT-1	WU-1a WT-5A/UT-1	–	–	WU-1a	WU-1a
Wired LAN	Built-in	UT-1	–	UT-1	–	UT-1	UT-1	–	–	–	–

SHOOTING MODES

	D4S	D810	Df	D750	D610	D7200	D7100	D5500	D5300	D3300	D3200
P/S/A/M	✓	✓	✓	✓	✓	✓	✓	✓	✓	✓	✓
Scene Modes	–	–	–	✓	✓	✓	✓	✓	✓	✓	✓
EFFECTS Modes	–	–	–	✓	–	✓	✓	✓	✓	✓	–
Guide Modes	–	–	–	–	–	–	–	–	–	✓	✓





Nikon Inc., 1300 Walt Whitman Road, Melville, NY 11747-3064 • (631) 547-4200

www.nikonusa.com • www.imagechaser.com



Made for Generation Image.