

Nikon Digital SLR Camera D5200 Specifications

Type of camera	Single-lens reflex digital camera
Lens mount	Nikon F mount (with AF contacts)
Effective angle of view	Nikon DX format; focal length equivalent to approx. 1.5x that of lenses with FX-format angle of view
Effective pixels	24.1 million
Image sensor	23.5 × 15.6 mm CMOS sensor
Total pixels	24.71 million
Dust-reduction System	Image Sensor Cleaning, Airflow Control System, Image Dust Off reference data (optional Capture NX 2 software required)
Image size (pixels)	6000 × 4000 (L), 4496 × 3000 (M), 2992 × 2000 (S)
File format	<ul style="list-style-type: none"> • NEF (RAW): 14 bit, compressed • JPEG: JPEG-Baseline compliant with fine (approx. 1:4), normal (approx. 1:8) or basic (approx. 1:16) compression • NEF (RAW) + JPEG: Single photograph recorded in both NEF (RAW) and JPEG formats
Picture Control System	Standard, Neutral, Vivid, Monochrome, Portrait, Landscape; selected Picture Control can be modified; storage for custom Picture Controls
Storage media	SD (Secure Digital) and UHS-1 compliant SDHC and SDXC memory cards
File system	DCF (Design Rule for Camera File System) 2.0, DPOF (Digital Print Order Format), Exif (Exchangeable Image File Format for Digital Still Cameras) 2.3, PictBridge
Viewfinder	Eye-level pentamirror single-lens reflex viewfinder
Frame coverage	Approx. 95% horizontal and 95% vertical
Magnification	Approx. 0.78x (50 mm f/1.4 lens at infinity, -1.0 m ⁻¹)
Eyepoint	17.9 mm (-1.0 m ⁻¹ ; from center surface of viewfinder eyepiece lens)
Diopter adjustment	-1.7 to +0.7 m ⁻¹
Focusing screen	Type B BriteView Clear Matte Mark VII screen
Reflex mirror	Quick return
Lens aperture	Instant return, electronically controlled
Compatible lenses	Autofocus is available with AF-S and AF-I lenses; autofocus is not available with other type G and D lenses, AF lenses (IX NIKKOR and lenses for the F3AF are not supported), and AI-P lenses; non-CPU lenses can be used in mode M , but the camera exposure meter will not function. The electronic rangefinder can be used with lenses that have a maximum aperture of f/5.6 or faster.
Shutter type	Electronically controlled vertical-travel focal-plane shutter
Shutter speed	1/4000 to 30 s in steps of 1/3 or 1/2 EV, bulb, time (requires optional ML-L3 Remote Control)
Flash sync speed	X=1/200 s; synchronizes with shutter at 1/200 s or slower
Release modes	<ul style="list-style-type: none"> • S (single frame), L (continuous low speed), H (continuous high speed), C (self-timer), 2s (delayed remote; ML-L3), Q (quick-response remote; ML-L3), Q (quiet shutter release); interval timer photography supported
Frame advance rate	Up to 3 fps (L) or 5 fps (H)
Self-timer	2 s, 5 s, 10 s, 20 s; 1 to 9 exposures
Exposure metering mode	TTL exposure metering using 2016-pixel RGB sensor
Metering method	<ul style="list-style-type: none"> • Matrix: 3D color matrix metering II (type G and D lenses); color matrix metering II (other CPU lenses) • Center-weighted: Weight of 75% given to 8-mm circle in center of frame • Spot: Meters 3.5-mm circle (about 2.5% of frame) centered on selected focus point • Matrix or center-weighted metering: 0 to 20 EV • Spot metering: 2 to 20 EV
Metering range (ISO 100, f/1.4 lens, 20°C/68°F)	• Spot metering: 2 to 20 EV
Exposure meter coupling	CPU
Exposure modes	Auto modes (A auto; S auto (flash off)); programmed auto with flexible program (P); shutter-priority auto (S); aperture-priority auto (A); manual (M); scene modes (S portrait; L landscape; C child; S sports; C close up; N night portrait; N night landscape; P party/indoor; B beach/snow; S sunset; D dusk/dawn; P pet portrait; L candlelight; B blossom; C autumn colors; F food; special effects modes (N night vision; C color sketch; M miniature effect; S selective color; S silhouette; H high key; L low key)
Exposure compensation	Can be adjusted by -5 to +5 EV in increments of 1/3 or 1/2 EV in P , S , A and M modes
Exposure bracketing	3 shots in steps of 1/3 or 1/2 EV
Exposure lock	Luminosity locked at detected value with L (ON) button
ISO sensitivity (Recommended Exposure Index)	ISO 100 to 6400 in steps of 1/3 EV; can also be set to approx. 0.3, 0.7, 1 or 2 EV (ISO 25600 equivalent) above ISO 6400; auto ISO sensitivity control available
Active D-Lighting	Auto, extra high, high, normal, low, off
ADL bracketing	2 shots
Autofocus	Nikon Multi-CAM 4800DX autofocus sensor module with TTL phase detection, 39 focus points (including 9 cross-type sensors), and AF-assist illuminator (range approx. 0.5 to 3 m/1 ft 8 in. to 9 ft 10 in.)
Detection range	-1 to +19 EV (ISO 100, 20°C/68°F)
Lens servo	<ul style="list-style-type: none"> • Autofocus (AF): Single-servo AF (AF-S); continuous-servo AF (AF-C); auto AF-S/AF-C selection (AF-A); predictive focus tracking activated automatically according to subject status • Manual focus (MF): Electronic rangefinder can be used
Focus point	Can be selected from 39 or 11 focus points
AF-area modes	Single-point AF, 9-, 21- or 39-point dynamic-area AF, 3D-tracking, auto-area AF
Focus lock	Focus can be locked by pressing shutter-release button halfway (single-servo AF) or by pressing L (ON) button
Built-in flash	Q , S , C , L , N , P , S , A , M , F : Auto flash with auto pop-up; P , S , A , M , F : Manual pop-up with button release
Guide number	Approx. 12/39, 13/43 with manual flash (m/ft, ISO 100, 20°C/68°F)
Flash control	TTL i-TTL flash control using 2016-pixel RGB sensor is available with built-in flash and SB-910, SB-900, SB-800, SB-700, SB-600 or SB-400; i-TTL balanced fill-flash for digital SLR is used with matrix and center-weighted metering, standard i-TTL flash for digital SLR with spot metering

Flash modes	Auto, auto with red-eye reduction, auto slow sync, auto slow sync with red-eye reduction, fill-flash, red-eye reduction, slow sync, slow sync with red-eye reduction, rear-curtain with slow sync, rear-curtain sync, off
Flash compensation	-3 to +1 EV in increments of 1/3 or 1/2 EV
Flash-ready indicator	Lights when built-in flash or optional flash unit is fully charged; flashes after flash is fired at full output
Accessory shoe	ISO 518 hot-shoe with sync and data contacts and safety lock
Nikon Creative Lighting System (CLS)	Advanced Wireless Lighting supported with SB-910, SB-900, SB-800 or SB-700 as a master flash or SU-800 as commander; Flash Color Information Communication supported with all CLS-compatible flash units
Sync terminal	AS-15 Sync Terminal Adapter (available separately)
White balance	Auto, incandescent, fluorescent (7 types), direct sunlight, flash, cloudy, shade, preset manual, all except preset manual with fine-tuning
White balance bracketing	3 shots in steps of 1
Live view lens servo	• Autofocus (AF): Single-servo AF (AF-S); full-time-servo AF (AF-F) • Manual focus (MF)
AF-area modes	Face-priority AF, wide-area AF, normal-area AF, subject-tracking AF
Autofocus	Contrast-detect AF anywhere in frame (camera selects focus point automatically when face-priority AF or subject-tracking AF is selected)
Automatic scene selection	Available in S and C modes
Movie metering	TTL exposure metering using main image sensor
Metering method	Matrix
Frame size (pixels) and frame rate	<ul style="list-style-type: none"> • 1920 × 1080, 60i (59.94 fields/s)/50i (50 fields/s)*, ★ high/normal • 1920 × 1080, 30p (progressive)/25p/24p, ★ high/normal • 1280 × 720, 60p/50p, ★ high/normal • 640 × 424, 30p/25p, ★ high/normal Frame rates of 30p (actual frame rate 29.97 fps), 60i, and 60p (actual frame rate 59.94 fps) are available when NTSC is selected for video mode; 25p, 50i, and 50p are available when PAL is selected for video mode; actual frame rate when 24p is selected is 23.976 fps *Sensor output is about 60 or 50 fps Note: A smaller crop is used for movies with a frame size/frame rate of 1920 × 1080 60i or 50i
File format	MOV
Video compression	H.264/MPEG-4 Advanced Video Coding
Audio recording format	Linear PCM
Audio recording device	Built-in or external stereo microphone; sensitivity adjustable
Maximum length	29 min. 59 s (3 min. in miniature effect mode)
ISO sensitivity	ISO 100 to 6400; can also be set to approx. 0.3, 0.7, 1, or 2 EV (ISO 25600 equivalent) above ISO 6400
Monitor	7.5-cm (3-in.), approx. 921k-dot (VGA), vari-angle TFT monitor with 170° viewing angle, approx. 100% frame coverage, and brightness adjustment
Playback	Full-frame and thumbnail (4, 9, or 72 images or calendar) playback with playback zoom, movie playback, photo and/or movie slide shows, histogram display, highlights, auto image rotation, and image comment (up to 36 characters)
USB	Hi-Speed USB
Video output	NTSC, PAL
HDMI output	Type C mini-pin HDMI connector
Accessory terminal	Wireless remote controller: WR-R10 (available separately) Remote cord: MC-DC2 (available separately) GPS unit: GP-1 (available separately)
Audio input	Stereo mini-pin jack (3.5-mm diameter)
Supported languages	Arabic, Chinese (Simplified and Traditional), Czech, Danish, Dutch, English, Finnish, French, German, Greek, Hindi, Hungarian, Indonesian, Italian, Japanese, Korean, Norwegian, Polish, Portuguese (Portugal and Brazil), Romanian, Russian, Spanish, Swedish, Thai, Turkish, Ukrainian
Battery	One EN-EL14 Rechargeable Li-ion Battery
AC adapter	EH-5b AC Adapter; requires EP-5A Power Connector (available separately)
Tripod socket	1/4 in. (ISO 1222)
Dimensions (W × H × D)	Approx. 129 × 98 × 78 mm/5.1 × 3.9 × 3.1 in.
Weight	Approx. 555 g/1 lb 3.6 oz with battery and memory card but without body cap; approx. 505 g/1 lb 1.8 oz (camera body only)
Operating environment	Temperature: 0 to 40°C/32 to 104°F; humidity: 85% or less (no condensation)
Supplied accessories	EN-EL14 Rechargeable Li-ion Battery, MH-24 Battery Charger, DK-5 Eyepiece Cap, DK-20 Rubber Eyecup, UC-E17 USB Cable, EG-CP16 Audio Video Cable, AN-DC3 Camera Strap, BF-1B Body Cap, BS-1 Accessory Shoe Cover, ViewNX 2 CD-ROM

• The SD, SDHC and SDXC logos are trademark of the SD Card Association. • PictBridge is a trademark. • HDMI, the HDMI logo and High-Definition Multimedia Interface are trademarks or registered trademarks of HDMI Licensing, LLC. • Google and Android™ are registered trademarks or trademarks of Google Inc. • Products and brand names are trademarks or registered trademarks of their respective companies. • Images in viewfinders, on LCDs and monitors shown in this brochure are simulated.



At the heart of the image

D5200

Discover New Perspectives

Stunningly sharp pictures. Full HD video. Creative freedom.



Specifications and equipment are subject to change without any notice or obligation on the part of the manufacturer. December 2012 © 2012 Nikon Corporation

	WARNING
TO ENSURE CORRECT USAGE, READ MANUALS CAREFULLY BEFORE USING YOUR EQUIPMENT. SOME DOCUMENTATION IS SUPPLIED ON CD-ROM ONLY.	

Visit the Nikon Europe website at: www.europe-nikon.com



Nikon U.K. Ltd. Nikon House, 380 Richmond Road, Kingston upon Thames, Surrey KT2 5PR U.K. www.nikon.co.uk
Foto Distributors Nikon House, 68 Kyalami Boulevard, Kyalami Business Park, Midrand, 1684, Republic of South Africa www.nikon.co.za
Nikon Canada Inc. 1366 Aerowood Drive, Mississauga, Ontario, L4W 1C1, Canada www.nikon.ca
NIKON CORPORATION Shin-Yurakucho Bldg., 12-1, Yurakucho 1-chome, Chiyoda-ku, Tokyo 100-8331, Japan www.nikon.com



If you are searching for a new, unique angle on your creative potential, the Nikon D5200 is the ideal companion for the next phase of your journey. Designed to inspire, the D5200 lets you shoot pictures and video from more perspectives using a vari-angle LCD monitor. You can also render distinctive-looking Special Effects in real time and send your images quickly to smart devices using the optional WU-1a Wireless Mobile Adapter. Within its remarkably small and lightweight body, the D5200 is packed with high-performance imaging technology. Expect incredibly sharp pictures and

video from a cutting-edge image sensor with a resolution of 24.1 effective megapixels. Enjoy faithful, vibrant colors from the state-of-the-art EXPEED 3 image-processing engine. Take advantage of the amazing accuracy of a 2016-pixel RGB sensor that is engineered to capture the subtleties of light as the human eye sees them. Capture the split-second thrill of dynamic action with approx. 5 fps continuous shooting, and experience the tack-sharp accuracy of an amazingly powerful, high-density 39-point AF system. The clarity of the optical

• Lens: AF-S DX NIKKOR 10-24mm f/3.5-4.5G ED • Image quality: RAW (NEF) • Exposure: [M] mode, 1/60 second, f/8 • White balance: Auto • Sensitivity: ISO 250 • Picture Control: Standard

©Douglas Menez

viewfinder will enhance your ability to concentrate on both moving and stationary subjects. Try the D5200's D-Movie format at 1920 x 1080 60i/50i, with full-time-servo AF for smooth, precise reproduction of fast-moving subjects in Full HD video. To realize the full potential of the camera's 24.1 megapixels, simply attach any NIKKOR lens and instantly bring dependable sharpness to your images. Combine your personal creativity with this camera's incredible power and potential, and you can transform your imagination into inspired images.



D5200

Available in three colors: black, red and bronze

Explore your full creative potential



©Douglas Menuez
• Lens: AF-S DX NIKKOR 18-55mm f/3.5-5.6G VR • Image quality: RAW (NEF) • Exposure: [A] mode, 1/400 second, f/6.3 • White balance: Auto • Sensitivity: ISO 200 • Picture Control: Portrait

More depth and drama in every image

24.1 effective megapixels with NIKKOR lenses: stunningly sharp, detailed images

New experiences. New insights. Newly discovered beauty and detail in the world around you. With the D5200, you can capture it all. Now you are perfectly equipped to realize your own perspective and turn your vision into images that you will be proud to show the world. The camera's newly developed Nikon DX-format CMOS image sensor has a resolution of 24.1 effective megapixels and delivers images with smooth, natural tones and sharp, incredibly subtle details. Despite the D5200's ultra-high resolution, the image sensor has been designed to maintain the integrity of every image, preserving detail in both shadows and highlights, even when you shoot images under high-contrast lighting. NIKKOR lenses are the perfect companion to image sensors with a pixel count of this magnitude. The uncompromising quality of the NIKKOR lens range renders images with sharpness and definition, creating a visible difference when used in conjunction with Nikon cameras.



NIKKOR
Capture more. Create more.

Rich, faithful, state-of-the-art color: EXPEED 3 image-processing engine

Warm, smooth skin tones. Natural color in areas of shadow. Strikingly accurate color combinations and sharp, minute detail in eyelashes and hair. Expect all of this and more with the D5200. At the heart of this amazing D-SLR lies the industry-leading, high-performance EXPEED 3 image-processing engine, used and respected by the world's leading professional photographers. The imaging intelligence of EXPEED 3 is utilized in every picture and video, creating vivid, stunningly rich results.



Clean, sharply detailed images in low light: high ISO performance

When you shoot at dusk, indoors, or in other locations where the scarcity of light creates a mood that you want to capture, the D5200's high ISO capability helps you realize these compositions cleanly and confidently. The camera's standard ISO range extends from 100 to 6400 (expandable to ISO 25600 equivalent), and you can shoot with shutter speeds fast enough to avoid subject blur even when you choose a high ISO setting. When you use high ISOs, Nikon's noise reduction technology maintains sharp edges, good saturation and a more natural look while intelligently removing noise. Experience the incredible difference that Nikon's high ISO capability can make.



• Lens: AF-S DX NIKKOR 16-85mm f/3.5-5.6G ED VR • Image quality: RAW (NEF) • Exposure: [A] mode, 1/60 second, f/5 • White balance: Auto • Sensitivity: ISO 3200 • Picture Control: Standard
©Douglas Menuez



• Lens: AF-S DX NIKKOR 18-55mm f/3.5-5.6G VR • Image quality: RAW (NEF) • Exposure: [M] mode, 2 seconds, f/8 • White balance: Auto • Sensitivity: ISO 1600 • Picture Control: Standard
©Douglas Menuez

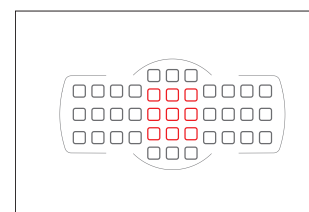


©Daisuke Kamimura
 • Lens: AF-S DX NIKKOR 18-300mm f/3.5-5.6G ED VR • Image quality: RAW (NEF) • Exposure: (M) mode, 1/1000 second, f/5.6 • White balance: Auto • Sensitivity: ISO 200 • Picture Control: Standard

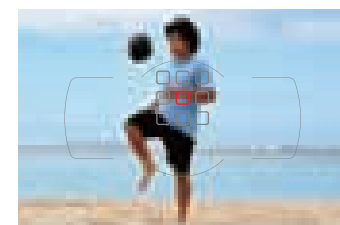
Get exhilarated: the right moment, the right composition

Capture tack-sharp photos during extreme action: high-density 39-point autofocus

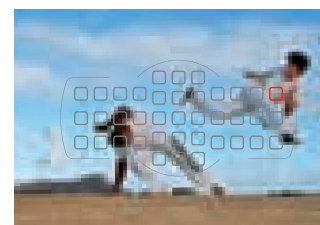
Imagine a scene where the position, movement and expression of your subjects are exactly as you envisage them. No matter where they are in the frame, the D5200's high-density 39-point wide-area coverage autofocus system is designed for tack-sharp capture at that exact moment. The camera's powerful autofocus system empowers the D5200 to take sharply focused pictures in a variety of different situations. Whether you shoot stationary subjects, candid photos or dramatic action, this camera is ready for them all. For the most powerful detection, the 9 AF points in the center feature cross-type sensors, and unique to Nikon, 3D-tracking uses the 2016-pixel RGB sensor to detect and memorize the color of your intended subject and track its movement using all 39 AF points. The power to capture challenging, dynamic action at its peak is now yours, thanks to the D5200 and its level of performance.



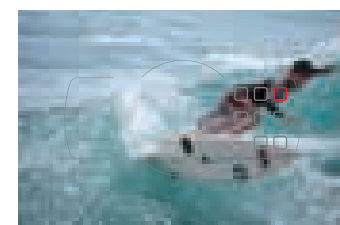
39-point AF system
 9 cross-type sensors



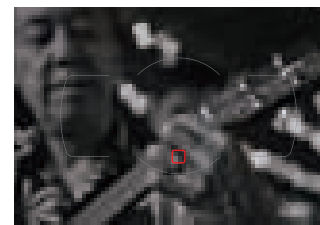
Dynamic-area AF mode (9 points)



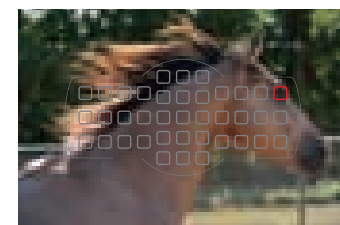
3D-tracking mode



Dynamic-area AF mode (21 points)



Single-point AF mode



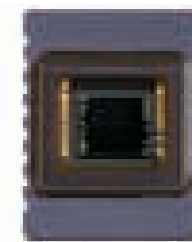
Dynamic-area AF mode (39 points)



Auto-area AF mode

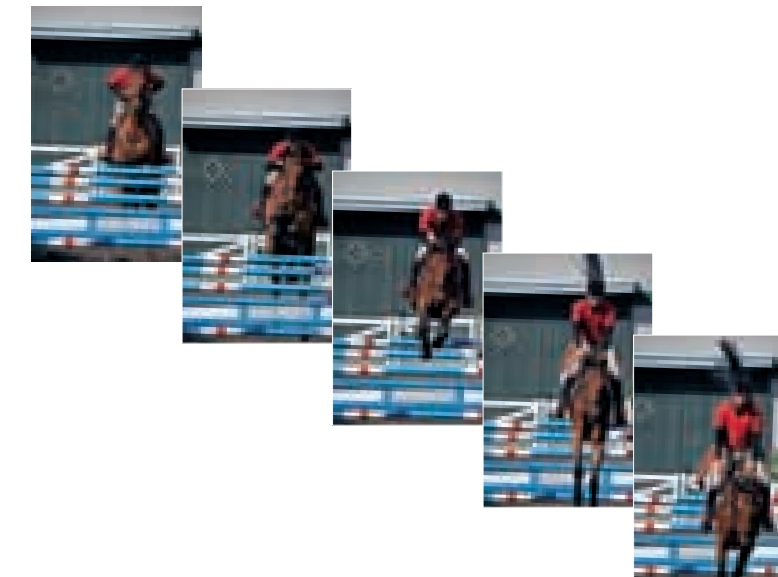
Accurate results even in difficult light: 2016-pixel RGB sensor and Scene Recognition System

The D5200 is designed to help you capture images as your eyes see them. Thanks to Nikon's exclusive Scene Recognition System and an incredibly accurate 2016-pixel RGB sensor, the camera analyzes the color and brightness information in each scene at a high level of precision. It automatically determines the most appropriate values for auto exposure, i-TTL flash control, autofocus and auto white balance (AWB). The result: pictures that more closely resemble the scene in front of you, just as you see it.



Be ready for any opportunity: approx. 5 fps continuous shooting

Get the right composition at the right moment. The D5200 delivers a versatile continuous frame rate for use both with the optical viewfinder and live view mode. With cameras that use an electronic viewfinder you can lose sight of quickly moving subjects. However, when shooting dynamic action through an optical viewfinder, you can clearly identify and capture fast-moving subjects at up to approx. 5 fps, even when panning the camera. An approx. 3 fps option is also available, which can be a more appropriate speed in certain situations, such as capturing natural facial expressions. The D5200 employs a newly developed high-speed and highly precise sequential control mechanism. When you shoot with live view, the mirror is held in the up position during image capture, thereby giving you continuous shooting that is both smooth and quiet, which can be a significant advantage in situations where silence is required.

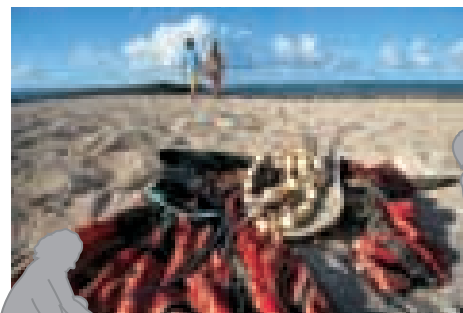


Experience creative vision from a new angle



Pictures and video from unique perspectives: vari-angle LCD monitor

As many photographers and videographers know, the most compelling composition isn't always seen from eye-level. That's why the D5200's vari-angle LCD monitor can be used from a wide variety of positions, enabling you to find unique perspectives that might be difficult to discover with an optical viewfinder. Whether you are taking photographs, filming action or even using a tripod, you can compose shots from unique vantage points such as above crowds at a concert or sporting event, or close to the ground when capturing images of children or flowers. Let the large, incredibly sharp 7.5-cm (3-in.) LCD monitor lead you to better image capture. Its approx. 921k dots give you high-definition viewing even under bright conditions, and Nikon's renowned AF system in live view mode provides fast and accurate detection during fleeting moments.



Shooting from a low angle, near ground level.



Shooting from a high angle.



Self-portrait, created by turning the LCD monitor toward yourself.



Improved interface for simple and intuitive camera settings

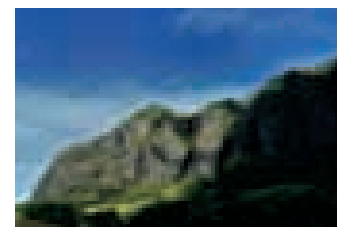
The newly designed LCD layout groups your most frequently adjusted camera settings for more intuitive access and adjustment. The D5200 also offers three background colors (black, blue and brown) for the LCD monitor, ensuring that the camera setting information can be clearly visible in both dark and bright situations.

Amazing detail in both highlights and shadows: HDR (High Dynamic Range) and Active D-Lighting

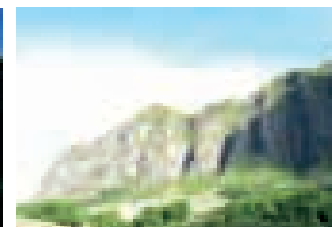
The D5200 can capture scenes with a wide dynamic range, but when the contrast between a scene's brightest and darkest areas is extremely high, the camera provides two solutions: HDR and Active D-Lighting. With adjustable intensity levels, both give you beautiful pictures that capture an extended range of light and shadow. HDR is recommended for stationary subjects such as



HDR



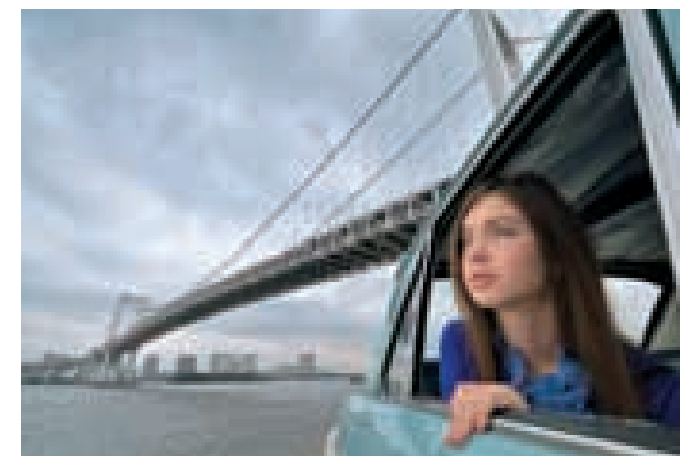
Underexposed



Overexposed

landscapes*, while Active D-Lighting is beneficial when shooting scenes with moving subjects. Both use the power of the EXPEED 3 image-processing engine to realize better and more faithful color integrity.

*The camera takes two shots within a single shutter release when in HDR mode. For optimum image sharpness, a tripod is recommended.



Active D-Lighting: ON



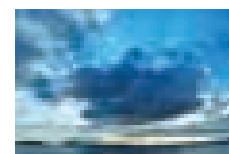
Active D-Lighting: OFF

Tailor-made settings, beautiful pictures: 16 Scene Modes and Scene Auto Selector

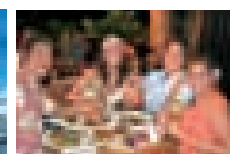
When shooting through the optical viewfinder, select a mode to instantly optimize camera settings from a wide range of shooting situations. Frequently used modes are located on the mode dial, while others can be selected by setting the dial to SCENE and rotating the command dial. When using live view, the Scene Auto Selector feature chooses the most suitable scene mode for your subject matter from the following options: Auto, Auto (flash off), Portrait, Landscape, Close up, and Night portrait.

Scene Modes employed on the D5200

Portrait, Landscape, Child, Sports, Close up, Night portrait, Night landscape, Party/indoor, Beach/snow, Sunset, Dusk/dawn, Pet portrait, Candlelight, Blossom, Autumn colors and Food



Dusk/dawn



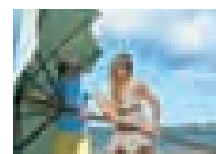
Party/indoor



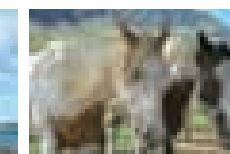
Food

Your own color palette for pictures and videos: Picture Control System

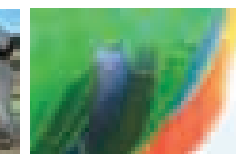
Customize the look of photos and videos using Picture Control. Choose from six settings: Standard, Neutral, Vivid, Monochrome, Portrait and Landscape. You can then adjust the settings and save your preferences for future use.



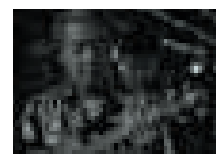
Standard



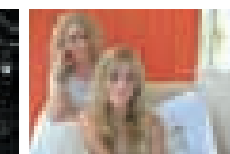
Neutral



Vivid



Monochrome



Portrait



Landscape

High-quality Full HD video for fast-moving action



HDMI Full HD
1920 x 1080 60i

The D5200 supports HDMI output so you can enjoy still images/movies on HDTV.

Note: Type C mini-pin HDMI cable (on the market) is required for playback.

Smooth, cinematic action video with Nikon's D-Movie: 1920 x 1080 60i/50i

One simple turn of the dedicated live view switch and the D5200 instantly becomes an incredible D-SLR video camera capable of shooting Full HD videos with sharpness, clarity and fluid motion. The combination of state-of-the-art image processing and an incredible image sensor minimizes noise, jaggies and moiré. Even when recording fast-moving, attention-grabbing action such as a galloping horse, a splash of water or the view from a moving car, the camera offers frame rate options up to 1080 60i/50i to give you smooth and natural video free of choppy motion. The vari-angle LCD monitor allows the camera to be held securely and steadily during handheld shots. When the camera is in mode M, exposure can be controlled manually, by changing shutter speed and ISO even when shooting with live view or recording movies. With such ease of operation combined with the potential of a wide array of NIKKOR lenses, extensive video production using a D-SLR becomes an appealing possibility. Whether you shoot clips, short films, or projects that combine stills and video, the D5200 can make it happen.

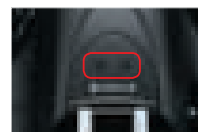
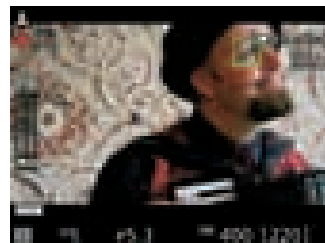
High-quality video in low-light scenes

The D5200 maintains a high level of video image quality even in low light. Increase the ISO setting to brighten your video footage in dark situations, and your images will retain the sharpness and detail that make pictures and video captured with 24.1 effective megapixels look so spectacular.

Autofocus for video shooting

Nikon's highly praised live view autofocus has full-time-servo AF (AF-F) and subject-tracking AF that keep your subjects sharp, even when they are in motion. Face-priority AF can instantly detect up to a maximum of 35 faces in a scene. In combination with NIKKOR lenses, the D5200 delivers fast, accurate autofocus during video shooting.

High-fidelity audio control and built-in stereo microphone



The quality of audio can make all the difference to a video. That's why the D5200 has a built-in stereo microphone that can be controlled either automatically or manually via 20 incremental steps. Audio levels can be visually confirmed on the LCD monitor both before and during video shooting for easy control.

Optional ME-1 Stereo Microphone

The optional ME-1 Stereo Microphone lets you record dynamic stereo sound and minimizes unwanted operational noise that may occur during autofocus.



Real-time Special Effects for creativity as you shoot

Make your still images and Full HD D-Movies look even more engaging. Choose from a variety of creative Special Effects, such as Selective color and Miniature effect. Effects like these can add dramatic impact to a still image or enrich the cinematic quality of your movies, and since they are applied in real time using live view, each unique "look" is available immediately, rather than through complicated post-production procedures. All effects work with both D-Movies and still pictures.



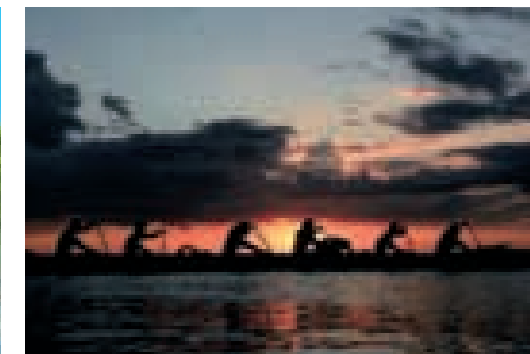
Selective color
Emphasize up to three colors in your image while rendering the rest in black and white.



Miniature effect
Adjust the focal plane to give distant, real-life subjects and landscapes the look of miniature models.



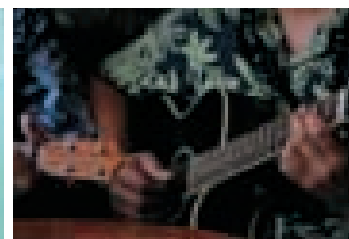
Color sketch
Give your images a pop-art feel by drawing out the subject's contours and create sketch-style images.



Silhouette
Add drama to your images by rendering your subject in silhouette against a bright background.



High key
Create a clean and soft atmosphere filled with light.



Low key
Create dark and somber images that emphasize highlights.



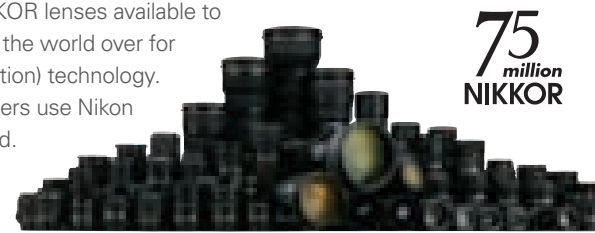
Night vision
Use under extremely low-light conditions to record monochrome images at high ISO sensitivities.



NIKKOR lenses and Nikon Speedlights: express through light

Infinite expressions: NIKKOR lenses

One of the most exciting aspects of shooting with the D5200 is the diverse range of NIKKOR lenses available to you. Simply switch lenses and you'll see the world differently. NIKKOR lenses are known the world over for their sharpness, reliability, versatility and innovations such as Nikon's VR (Vibration Reduction) technology. Optical quality and innovations like these are important reasons why so many photographers use Nikon cameras. Nikon's exclusive lens brand has come to represent the finest optics in the world. See for yourself how far your creative options increase when using NIKKOR lenses.



• Lens: AF-S DX NIKKOR 35mm f/1.8G • Image quality: RAW (NEF) • Exposure: [A] mode, 1/1000 second, f/2.2 • White balance: Auto • Sensitivity: ISO 250 • Picture Control: Portrait ©Douglas Menuez



AF-S DX NIKKOR 35mm f/1.8G

Compact and lightweight, yet offering the exceptional sharpness you would expect from a prime lens. A great match for the D5200's high-resolution capability, this prime lens allows you to take pictures and record video more easily in low light, while its large aperture settings make artistic bokeh (beautiful background blur) easy to achieve. Recommended for candid portraits and landscapes.



• Lens: AF-S DX NIKKOR 10-24mm f/3.5-4.5G ED • Image quality: RAW (NEF) • Exposure: [A] mode, 1/200 second, f/16 • White balance: Auto • Sensitivity: ISO 400 • Picture Control: Standard ©Douglas Menuez



AF-S DX NIKKOR 10-24mm f/3.5-4.5G ED

A powerful lens choice when you want to capture more of a scene from a confined space, such as inside a small room. Ultra-wide-angle coverage delivers dramatic perspectives, giving your pictures a creative edge. The wide-angle nature of the lens also makes it ideal for filming establishing shots when recording video.

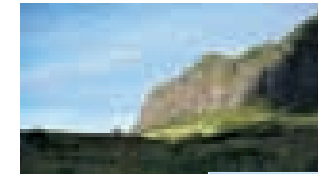


• Lens: AF-S DX Micro NIKKOR 40mm f/2.8G • Image quality: RAW (NEF) • Exposure: [A] mode, 1/320 second, f/4 • White balance: Auto • Sensitivity: ISO 400 • Picture Control: Vivid ©Douglas Menuez



AF-S DX Micro NIKKOR 40mm f/2.8G

With a compact and lightweight design that complements the D5200, this lens is perfect for small subjects at close distances. Enjoy stunningly sharp detail and dramatic bokeh up to life-size (1x) close-ups. Micro lenses are also recommended for unique portrait compositions and dramatic video clips.



Focal length: 18 mm



Focal length: 300 mm



AF-S DX NIKKOR 18-300mm f/3.5-5.6G ED VR

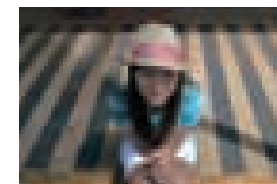
Ultra-high-power approx. 16.7x super-telephoto zoom lens with Vibration Reduction (VR II) lets you go wide and get close to distant subjects. Thanks to the inclusion of VR II, sharp images are possible at high zoom ratios even when shooting handheld. The strong telephoto compression effect makes for dynamic images by bringing distant subjects up close. Great for sports, nature and wildlife.

• Lens: AF-S DX NIKKOR 18-300mm f/3.5-5.6G ED VR • Image quality: RAW (NEF) • Exposure: [A] mode, 1/1250 second, f/5.6 • White balance: Auto • Sensitivity: ISO 400 • Picture Control: Landscape ©Douglas Menuez

Ideal illumination for any scene: Nikon Creative Lighting System

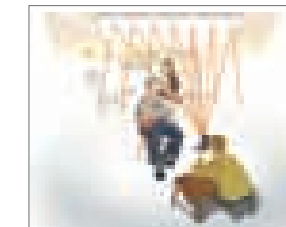
Adding the right light can transform a good picture into something spectacular. With the D5200, flash photography is easy and inspiring. Thanks to Nikon's intelligent i-TTL flash control system, the camera automatically evaluates the ambient light and then calculates the right light, scene after scene, image after image.

The camera's built-in pop-up flash adds just enough light to reduce shadows on nearby subjects. When you want soft light indoors, try a bounce flash with the SB-400 or SB-700. The SB-700 supports Advanced Wireless Lighting that enables wireless shooting with multiple Speedlights.



Soften shadows: built-in pop-up flash

Let the camera add just enough light to soften shadows in the faces of subjects who are backlit or wearing a hat or hood. Auto and Portrait modes add the right light automatically for you, popping up the built-in flash when the need arises.



One additional light for soft bounce effect

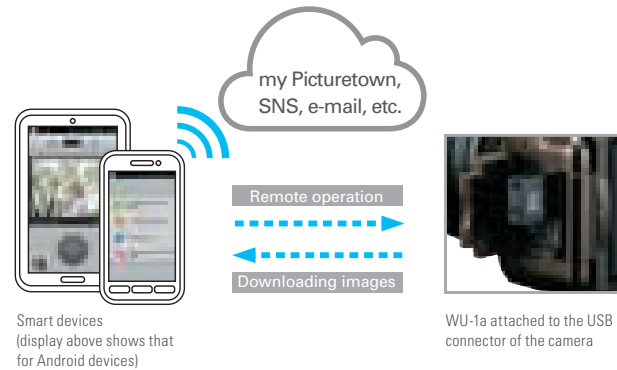
Just one small SB-400 with its flash head angled up is all it takes for bounce flash. The light bounces off the ceiling to provide a soft illumination that might otherwise be too direct or harsh.

Software and accessories for even more creativity

WU-1a Wireless Mobile Adapter

Connecting the optional WU-1a Wireless Mobile Adapter to the D5200 allows you to take pictures and then send them wirelessly to your smart device — a quick and easy way to move your images onto social networking services (SNS) and get an instant reaction from friends and family. You can also easily e-mail pictures to specific people or groups, or take advantage of photo-sharing websites, including Nikon's own my Picturetown. You can also use your smart device as a remote "live view" monitor and to release the shutter. The WU-1a is compatible with smart devices using the iOS or Android™ OS.

Note: This function requires installing a Wireless Mobile Adapter Utility to the smart device prior to use. The utility can be downloaded at no charge from the appropriate application store.



WR-R10/WR-T10 Wireless Remote Controller

Wireless remote camera control has never been easier. Instead of using conventional infrared transmission, the new WR-R10 and WR-T10 communicate via radio for increased range. Because radio transmission is used, communication is possible even with no direct line of sight between devices. These new wireless remote control accessories also enable various operations such as autofocus, video recording, continuous shooting and quiet shutter-release shooting. Use the WR-T10 as a transmitter, to trigger a single or multiple cameras with the WR-R10 attached*. This permits capture of the same moment from multiple perspectives and with different lenses as a still and/or video.



WR-R10 (Transceiver)



WR-T10 (Transmitter)

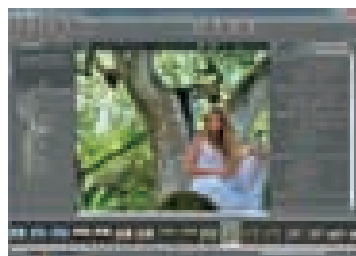
*WR-T10 and WR-R10(s) have to be set to the same channel and paired in advance to achieve simultaneous release.
Note: Depending on the camera, there may be a limitation to the accessories that can be attached simultaneously with the WR-R10 Wireless Remote Controller. Attempting to forcibly attach accessories can damage the camera or accessory.



Maximum reachable distance is approx. 20 m (66 ft). Comfortable remote shooting is assured even if there are people or objects between the remote controller and camera.

Your Imaging Toolbox: ViewNX 2 (supplied)

ViewNX 2 is the convenient way to manage images on your computer, with useful functions for storing, browsing, editing and sharing both photos and movies. Labels can be attached to images, facilitating faster searches at a later date. This exceptional and easy-to-use bundled software also offers a wide range of editing functions, including rotate, resize, crop, straighten, auto red-eye correction and more. ViewNX 2 software also works effortlessly with Nikon's photo-sharing website, my Picturetown, making the uploading and viewing of your images online quick and easy. The my Picturetown application is also compatible with smart devices.

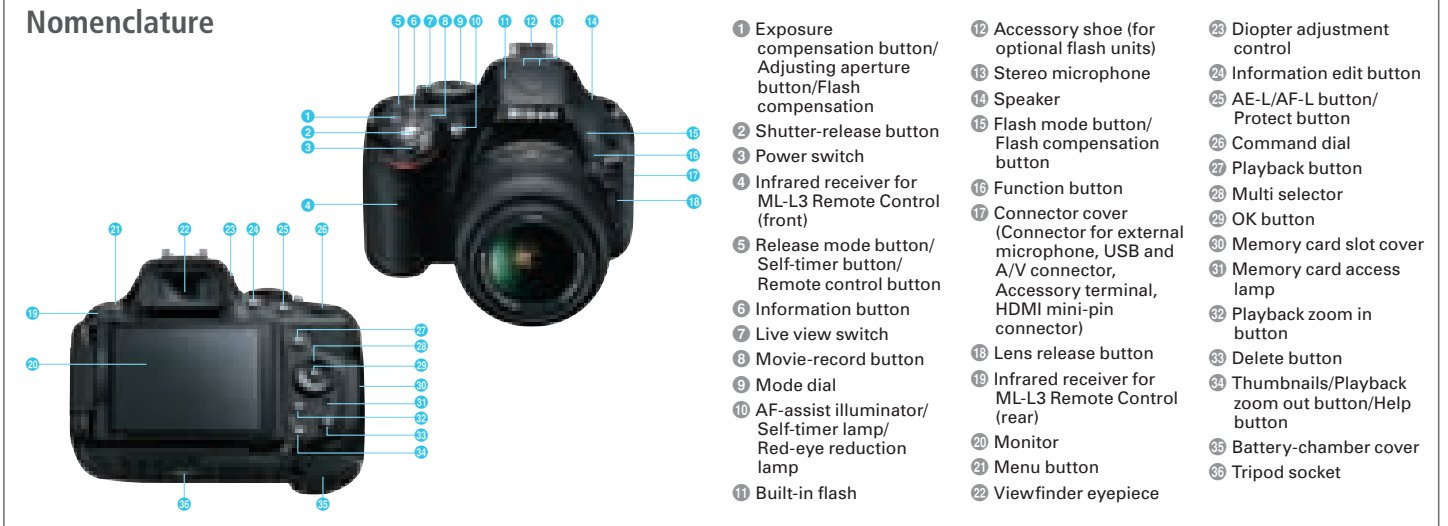


Get the highest quality from your images with intuitive operation: Capture NX 2 (optional)

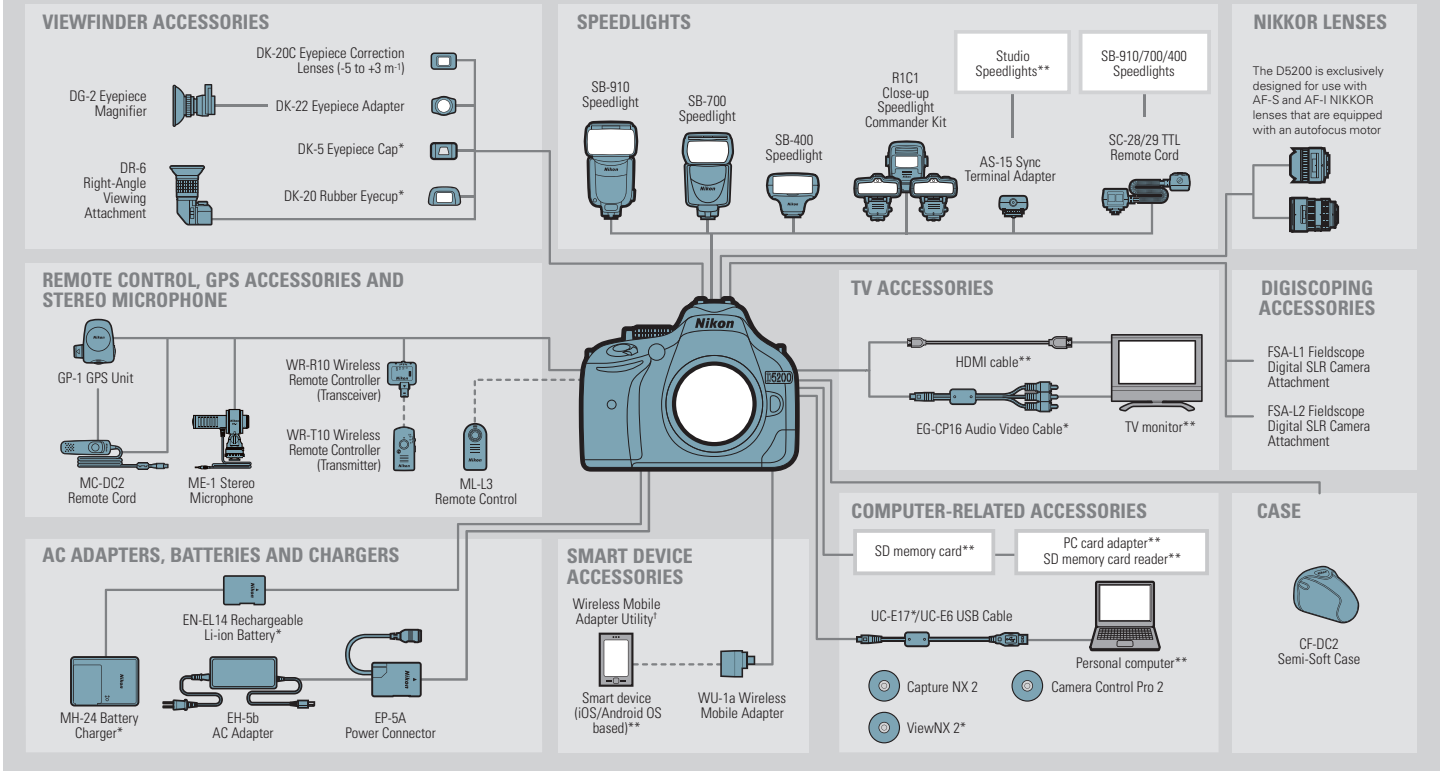
If you shoot RAW images and require the optimum quality from the file, Capture NX 2 is the ideal choice for RAW processing software. A powerful tool for more advanced and elaborate photo editing, Capture NX 2 features intuitive Color Control Points that dramatically simplify many image enhancement procedures.



Nomenclature



System chart



† Can be downloaded from the application store of each smart device (free).

*Supplied accessories **Non-Nikon products

Memory card capacity

The following table shows the approximate number of pictures that can be stored on an 8 GB SanDisk Extreme Pro SDHC UHS-I card at different image quality and size settings.

Image quality	Image size	File size ¹	No. of images ¹	Buffer capacity ²
NEF (RAW) + JPEG fine ³	Large	37.0 MB	152	6
	Medium	32.2 MB	173	6
	Small	28.5 MB	192	6
NEF (RAW) + JPEG normal ³	Large	30.9 MB	178	6
	Medium	28.4 MB	192	6
	Small	26.5 MB	203	6
NEF (RAW) + JPEG basic ³	Large	27.7 MB	196	6
	Medium	26.6 MB	204	6
	Small	25.6 MB	210	6
NEF (RAW)	—	24.6 MB	217	8
	Large	12.2 MB	507	35
	Medium	7.4 MB	853	100
JPEG fine	Large	3.8 MB	1600	100
	Medium	6.2 MB	1000	100
	Small	3.7 MB	1600	100
JPEG normal	Large	1.9 MB	3200	100
	Medium	3.0 MB	1900	100
	Small	1.9 MB	3200	100
JPEG basic	Large	1.0 MB	6000	100
	Medium	1.9 MB	3200	100
	Small	1.0 MB	6000	100

Approved memory cards

The following SD memory cards have been tested and approved for use in the D5200. Cards with class 6 or faster write speeds are recommended for movie recording. Recording may end unexpectedly when cards with slower write speeds are used.

	SD memory cards	SDHC memory cards ⁵	SDXC memory cards ⁶
SanDisk		4 GB, 8 GB, 16 GB, 32 GB	64 GB
Toshiba		4 GB, 8 GB, 16 GB, 32 GB	48 GB, 64 GB
Panasonic	2 GB ⁴	4 GB, 8 GB, 16 GB, 32 GB	64 GB, 128 GB
Lexar Media	Platinum II	4 GB, 8 GB, 16 GB, 32 GB	—
	Professional	—	64 GB, 128 GB
	Full-HD Video	—	4 GB, 8 GB, 16 GB

1 All figures are approximate. Results will vary with card type, camera settings, and scene recorded.
2 Maximum number of exposures that can be stored in memory buffer at ISO 100. Drops when long exposure noise reduction or auto distortion control is on.
3 Image size applies to JPEG images only. Size of NEF (RAW) images cannot be changed. File size is the total for NEF (RAW) and JPEG images.
4 Check that any card readers or other devices with which the card will be used support 2 GB cards.
5 Check that any card readers or other devices with which the card will be used are SDHC-compliant. The camera supports UHS-I.
6 Check that any card readers or other devices with which the card will be used are SDXC-compliant. The camera supports UHS-I.

