



COOLPIX S200 · S500

At the heart of the image™



COOLPIX. STYLE
brilliance made beautiful



Optical & Electronic VR Image Stabilization

Stability advanced... images enhanced.



without vibration reduction



with vibration reduction

You can shoot sharper, clearer and without blur with Nikon's ingenious Vibration Reduction. VR Image Stabilization detects and corrects for camera movement to give you rock-steady results time after time in lower light. So effective, it even lets you shoot in lower light. The **COOLPIX S500** features Optical VR Image Stabilization and the **S200** features Electronic VR Image Stabilization.



VR image stabilization

High Performance



Underneath the stylish stainless steel body, the **COOLPIX S500** conceals the heart of a true performance camera. Among compact digital cameras the **COOLPIX S500** is fast. Start up time is an amazing 0.6 seconds and shutter lag, in release priority mode, is just 0.005 seconds.

ISO 2000 Capability

See what you've been missing.



The **COOLPIX S500** offers light sensitivity up to ISO 2000 allowing you to tackle scenes and situations far beyond the capabilities of conventional compacts, it gives you great exposures in significantly lower light. The **COOLPIX S200** can be manually set as high as 1000 ISO.



Better pictures in lower light

Incredible, Bright 2.5" LCD

Makes shooting and sharing pictures easier.



Multi Selector on the COOLPIX S200

COOLPIX S500 shown

The **COOLPIX S200 and S500** are equipped with an incredible 2.5" LCD great for viewing images anywhere, anytime. Anti-reflective coating makes it easier for everyone to see and enjoy images. The larger LCD lets you make the most of smooth, sharp movies, and great-looking stills.



Nikon In-Camera Innovations

Makes taking great pictures easy!

COOLPIX S500 Rotary Multi Selector Display

Swift circular scrolling action allows speedy image browsing at up to 10 images per second. On-screen icon with cursor tracks scrolling for easy feature selection.

Blur Warning

alerts you to a blurry image.

Auto Image Rotation

Detects pictures that have been taken with the camera held vertically and automatically rotates the image for in-camera LCD playback.

Noise Reduction Mode

minimizes digital artifacts in long exposures.

In-Camera Cropping

allows you to crop out the part of the image you don't want and keep the part you do.

Color Options

allows you to make pictures more vivid or record monochromes.

Best Shot Selector

enables the camera to take a series of photos and automatically select the one with the sharpest focus.

Date and Time Imprinting

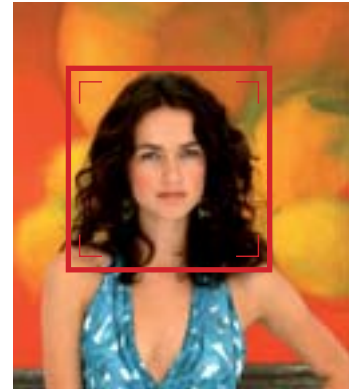
is available to document the exact time and date that your photo is taken.

Voice Memo Function

records up to 20 seconds of sound that can be then attached to an image.



In-Camera Red-Eye Fix™ This in-camera feature automatically fixes most typical occurrences of red-eye.



D-Lighting Compensates for underexposed images or insufficient flash by automatically adding light and detail to selected shots where needed -- without affecting properly exposed areas.

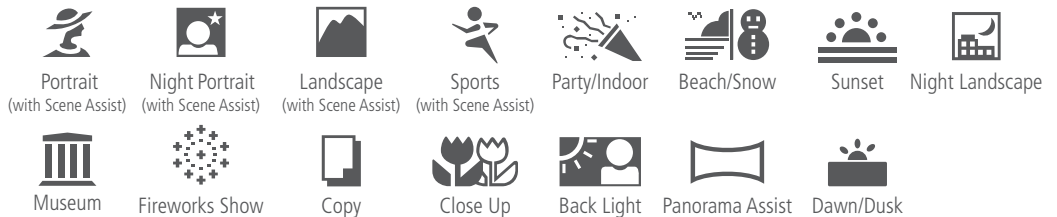
COOLPIX S500 One-Touch Portrait Button Your shortcut to three unique innovations, it offers instant access to Face-priority AF and In-Camera Red-Eye Fix™ for optimized image capture and lets you transform exposure with Nikon's powerful D-Lighting advantage.



Simply better portraits

Face-Priority AF Automatically finds and focuses on people's faces to ensure superb portraits with clear, crisp focus.

Innovative Automatic Features Simply Brilliant



The COOLPIX S200 and S500 feature 15 specially programmed modes to automatically handle focus, exposure, white balance and other adjustments that help you take great pictures easily.





Beauty has always been in the eye of the beholder,
now it's in the hands of the photographer.

3x Optical Zoom - Nikkor glass lens

High quality lenses deliver high quality pictures.

The Zoom Nikkor Lens gives you the power of 3x optical zoom lens, 38-114mm (S200) and 35-105mm (S500) for 35mm equivalent while Macro capability lets you get as close as 3.9 inches. This combination is supported by Nikons' world-renowned optical technology delivering crisp, clear images.

3x Optical Zoom-Nikkor Glass Lens plus 4x Digital zoom equals 12x zoom range



wide



telephoto

In-Camera Color Options & QuickTime™ Movie with Sound



standard



vivid color



black and white



sepia



cyanotype



Shoot a Quicktime Movie with sound at 30 frames per second

Five color shooting options.

Transfer Directly to Printer, TV or Web



via Supplied USB Cable



via Supplied USB Cable



via Supplied Audio-Video Cable

Print directly from your camera You can transfer images directly to print, without the need of a PC, when using PictBridge and USB Direct Print compatible printers.

Connect directly to your TV Show friends and family the results on a grand scale with the supplied video cable.

COOLPIX S200 · S500

Key Features

7.1 Megapixels for beautiful prints up to 16 x 20 inches.

VR Image Stabilization to minimize camera shake. *Optical VR - S500, Digital VR - S200*

High Light Sensitivity up to ISO 2000 (S500) up to ISO 1000 (S200)

High Quality 3x Optical Zoom-Nikkor glass lens for incredibly sharp, clear images.

High Resolution, bright 2.5 Inch LCD for easy viewing and playback of pictures.

Rotary Multi Selector lets you speed dial your selections at 10 fps. (S500)

All New Stylish, Metal Design slips right into your shirt pocket or purse.

Auto Image Rotation will automatically rotate vertical images in the camera.

Ultra-Light Weight of approximately 4.4 oz. (without battery and SD card).

Nikon In-Camera Red-Eye Fix™ automatically fixes most instances of red-eye.

Nikon D-Lighting automatically brightens the dark areas in the picture when in playback mode.

Face-Priority AF automatically finds a face and focuses on it for crisp, sharp portraits.

15 Scene Modes, for taking great pictures, easily and automatically.

Longer Battery Life shoot approximately up to 230 images on a single charge of the included lithium-ion (Nikon EN-EL10) rechargeable battery.

Adjustable Graphic User Interface allows you to change the interface to view either the icon view or the traditional menu item view.

In-Camera Help button instantly displays an explanation for all the functions within all menus.

Take Great Close-Up Pictures with the ability to focus as close as 3.9 inches from your subject. *5.9 inches with the S500*

Movie Mode with sound available at 30 frames per second.

26MB Internal Memory allows you to begin taking pictures immediately. *20MB internal memory with the S200*

Print Directly to a Printer by connecting directly to a PictBridge-compatible printer.



Accessories



Included: Wrist Strap, USB Cable, Audio Video Cable, EN-EL10 Rechargeable Battery, Battery Charger MH-63, PictureProject™ CD-Rom



Leather Case (optional)



AC Adapter EH-62D (optional)

COOLPIX® incredible digital



Built-in flash

3x Optical
Zoom-Nikkor
Glass Lens

COOLPIX S500
3.5" w x 2.0" h x 0.9" d
(only 4.4 oz!)



Mode Button

COOLPIX S500
Incredible, Bright High
Resolution 2.5" LCD
Monitor for high
visibility in daylight



less
than
0.9"
thick

7.1
Effective
Megapixels

3X
Optical
Zoom-Nikkor
Glass Lens

2.5"
Incredible, Bright,
High Resolution
LCD Screen

VR
Image
Stabilization

COOLPIX S200 • S500

Digital Camera Specifications



**Better pictures
in lower light**

**VR image
stabilization**

**Simply better
portraits**

Effective pixels	S500/S200: 7.1 million
Image sensor	S500: 1/2.5-in. CCD; total pixels: approx. 7.41 million S200: 1/2.5-in. CCD; total pixels: approx. 7.41 million
Lens	S500: 3x Zoom-Nikkor; 5.7-17.1mm (35mm [135] format picture angle: 35-105mm); f/2.8-4.7; 5 elements in 5 groups; Digital zoom: up to 4x (35mm [135] format picture angle: 420mm) S200: 3x Zoom-Nikkor; 6.3-18.9mm (35mm [135] format picture angle: 38-114mm); f/3.1-5.9; 6 elements in 5 groups; Digital zoom: up to 4x (35mm [135] format picture angle: 456mm)
Focus range (from lens)	S500: 1 ft. 8 in. (50cm) to infinity (∞), Macro close-up mode: 5.9 in. (15cm) to infinity (∞) S200: 2 ft. (60cm) to infinity (∞), Macro close-up mode: 3.9 in. (10cm) to infinity (∞)
Monitor	S500: 2.5-in., 230,000-dot, TFT LCD with anti-reflection coating S200: 2.5-in., 153,000-dot, TFT LCD with anti-reflection coating
Storage media	S500: Internal memory (approx. 26 MB), SD memory cards S200: Internal memory (approx. 20 MB), SD memory cards
Movie	S500: With sound: TV movie (640) at 30fps, Small size (320) at 30fps/15fps, Smaller size (160) at 15fps; Without sound: Time-lapse movie at 30fps, Stop-motion movie S200: With sound: TV movie (640) at 30fps, Small size (320) at 30fps/15fps, Smaller size (160) at 15fps; Without sound: Time-lapse movie at 30fps, Stop-motion (640), Electronic VR (Vibration Reduction) available except with Time-lapse movie
Image size (pixels)	S500: 3072 x 2304 (High: 3072*/Normal: 3072), 2592 x 1944 (Normal: 2592), 2048 x 1536 (Normal: 2048), 1024 x 768 (PC: 1024), 640 x 480 (TV: 640), 3072 x 1728 (16:9) S200: 3072 x 2304 (High: 3072*/Normal: 3072), 2592 x 1944 (Normal: 2592), 2048 x 1536 (Normal: 2048), 1024 x 768 (PC: 1024), 640 x 480 (TV: 640), 3072 x 1728 (16:9)
Vibration Reduction (VR) Image Stabilization	S500: Optical Lens shift VR Image Stabilization S200: Electronic VR Image Stabilization
ISO sensitivity	S500: ISO 50, 100, 200, 400, 800, 1600, 2000, Auto (auto gain ISO 50-1000) S200: ISO 50, 100, 200, 400, 800, 1000, Auto (auto gain ISO 50-800)
Built-in flash	S500: Range: (W) 1 ft. 8 in. to 24 ft. 7 in. (0.5 to 7.5m), (T) 1 ft. 8 in. to 13 ft. 1 in. (0.5 to 4.0m) S200: Range: (W) 2 ft. to 17 ft. 9 in. (0.6 to 5.4m), (T) 2 ft. to 9 ft. 2 in. (0.6 to 2.8m)
Interface	S500/S200: USB

Supported languages	S500/S200: Czech, Danish, German, English, Spanish, French, Indonesian, Italian, Dutch, Norwegian, Polish, Portuguese, Russian, Finnish, Swedish, Chinese (Simplified and Traditional), Japanese, Korean, Thai
Power sources	S500/S200: Rechargeable Li-ion Battery EN-EL10 (supplied), AC Adapter EH-62D (optional)
Battery life	S500: Approx. 180 shots with EN-EL10 battery (based on CIPA standard) S200: Approx. 230 shots with EN-EL10 battery (based on CIPA standard)
Dimensions (WxHxD)	S500: Approx. 3.5 x 2.0 x 0.9 in. (88 x 51 x 22 mm) (excluding projections) S200: Approx. 3.6 x 2.2 x 0.7 in. (91.5 x 56.5 x 18.5 mm) (excluding projections)
Weight	S500/S200: Approx. 4.4 oz. (125 g) (without battery and SD memory card)
Supplied Accessories*	S500/S200: Rechargeable Li-ion Battery EN-EL10, Battery Charger MH-63, USB Cable UC-E6, Audio Video Cable EG-CP14, Strap, PictureProject CD-ROM
Optional Accessories:	S500/S200: AC Adapter EH-62D, Leather Case
* Supplied accessories may differ by country or area.	

PictureProject System Requirements

OS	Macintosh: Mac OS X version 10.3.9, 10.4.x Windows: Windows Vista(32bit), Windows XP Home Edition/Professional, Windows 2000 Professional pre-installed models
Note	CD-ROM drive required for installation. Only built-in USB ports are supported

Microsoft[®] and Windows[®] are either registered trademarks or trademarks of Microsoft Corporation in the United States and/or other countries. Macintosh[®] and QuickTime[®] are either registered trademarks or trademarks of Apple Computer Inc. in the United States and/or other countries. The SDHC logo is a trademark. PictBridge is a trademark. D-Lighting technology is provided by Apical Limited. Products and brand names are trademarks or registered trademarks of their respective companies. The FotoNation logo is a trademark.

Specifications and equipment are subject to change without any notice or obligation on the part of the manufacturer. February 2007 ©2007 NIKON CORPORATION.

WARNING: TO ENSURE CORRECT USAGE, READ MANUALS CAREFULLY BEFORE USING YOUR EQUIPMENT. SOME DOCUMENTATION IS SUPPLIED ON CD-ROM ONLY.



Nikon Inc.,
1300 Walt Whitman Road, Melville, N.Y. 11747-3064 nikondigital.com / 1800-Nikon-UX