



# COOLPIX P5000

*At the heart of the image™*



## COOLPIX. PERFORMANCE

passion made powerful



COOLPIX PERFORMANCE



## Versatile Shooting Modes

The new Mode dial gives access to four exposure modes that advanced photographers desire for even greater control over camera operations. Programmed Auto (P) mode automatically selects shutter and aperture settings for optimal exposure. Shutter-priority Auto (S) lets the photographer automatically select a desired shutter speed, and the camera sets the optimal aperture setting. Aperture-priority Auto (A) offers 10-step control over the aperture setting in 1/3 EV increments to let the photographer control depth of field, while the camera automatically adjusts the shutter speed to achieve optimal exposure. Manual (M) exposure mode gives the photographer full control over both aperture and shutter speed settings. In addition, a selection of 16 Scene modes and seven different movie modes can be easily accessed via the Mode dial and high-resolution 2.5 inch LCD.



## VR Optical Image Stabilization Stability advanced... images enhanced



*without vibration reduction*



*with vibration reduction*



**VR image stabilization**

This mode automatically compensates for minor camera movements, lets you shoot without blurring in lower light and allows you to take advantage of slower shutter speeds.

Originally developed for Nikon SLR lenses, the Optical Image Stabilization system helps you overcome camera shake. The system automatically detects and compensates for small movements that would otherwise cause images to blur, and enables a shooting experience similar to shooting at shutter speeds three stops faster, while also providing a smoother image on the LCD. The result is sharper pictures when shooting in low light, taking advantage of the 3.5x zoom when using the optical telephoto converter lens. Great for shooting steadier movies as well!

## Strong, Lightweight, Magnesium Alloy Construction



The **COOLPIX P5000** features advanced functions which are skillfully packed into a solid body that features a magnesium alloy front panel, for durability in a lightweight package.

## 3200 ISO Capability See what you've been missing.



High light sensitivity up to ISO 3200 allows you to tackle scenes and situations far beyond the capabilities of conventional compacts, offering new power to capture fast-moving objects with outstanding clarity and gives you great exposure in significantly lower light.



**Better pictures in lower light**



COOLPIX PERFORMANCE



# Nikon In-Camera Innovations

## Makes taking powerful pictures easy!

### Auto Image Rotation

Detects pictures that have been taken with the camera held vertically and automatically rotates the image for in-camera LCD playback.

### In-Camera Cropping

Allows you to crop out the part of the image you don't want and keep the part you like.

### Best Shot Selector

Enables the camera to take a series of photos and automatically select the one with the sharpest focus.

### Noise Reduction Mode

Minimizes digital artifacts in long exposures.

### Audio Voice Recordings

Records up to 5 hours of sound over the built-in microphone and played back over the built-in speaker.



Simply better portraits

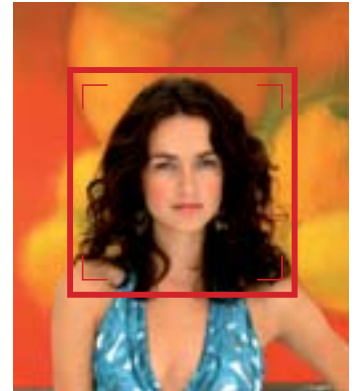


**In-Camera Red-Eye Fix™** This in-camera feature automatically fixes most typical occurrences of red-eye.



**D-Lighting** Compensates for underexposed images or insufficient flash by automatically adding light and detail to selected shots where needed -- without affecting properly exposed areas.

**Optimize Image Options** Easily accessed optimization options closely tailor results to the scene at hand or the intended use of the image. Image sharpening, tone compensation, color mode, saturation and hue adjustment is controlled by the user-selected choice of Normal, Softer, Vivid, More Vivid, Portrait, Custom or Black and White options.



**Face-Priority AF** Automatically finds and focuses on people's faces to ensure superb portraits with clear, crisp focus

**Live Histogram Function** Graphically indicates shadow levels on the left and highlights on the right and helps you avoid under/over exposure before shooting.



## Incredible, Bright 2.5" LCD

### For viewing and sharing

The **COOLPIX P5000** includes an optical viewfinder which helps achieve accurate composition in direct sunlight and other brightly lit conditions which can sometimes make an LCD monitor difficult to use.

*Great for viewing images anywhere, anytime!*





Outstanding power and advanced features  
designed to unleash your creative passion.





## 3.5x Optical Zoom - Nikkor lens with Vibration Reduction

High quality lenses deliver high quality pictures.



36mm

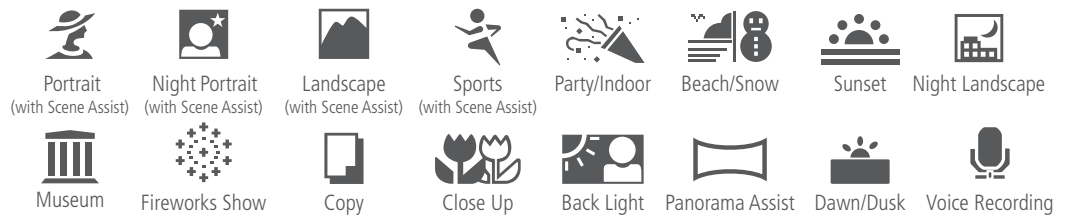


126mm

256 Segment Matrix Metering system enables optimal exposures in challenging lighting situations.

Nikon COOLPIX VR Image Stabilization technology is incorporated into the lens and helps you capture sharp images while minimizing the effects of camera shake. The power of the 3.5x optical zoom lens, 36-126mm (35mm equivalent), plus 4x digital zoom equals 14x zoom range. Macro capability lets you shoot as close as 1.6 inches and - this combination is supported by Nikon's world renowned optical technology delivering clear, crisp images backed by image stabilizing VR assurance.

## Innovative Automatic Features Simply Brilliant



The **COOLPIX P5000** features 16 specially programmed modes to automatically handle focus, exposure, white balance and other adjustments that help you take great pictures easily.

## System Expanding Accessories



TCE-3ED Telephoto Converter (optional) (requires UR-E20)



WC-E67 Wide Angle Adapter (optional) (requires UR-E20)



SB-400 Speedlight (optional)



Leather Case (optional)



AC Adapter EH-62A (optional)



Included: Neck Strap, USB Cable, Audio Video Cable, Li-ion Rechargeable Battery EN-EL5, Battery Charger MH-61, PictureProject™ CD-Rom

# COOLPIX® P5000

## Key Features

**10.0 Megapixels** for beautiful prints up to 20 x 30 inches.

**Optical VR Image Stabilization** allows sharp hand-held images at up to 3 shutter speeds slower than normally possible.

**High Quality 3.5x Optical Zoom-Nikkor** glass lens for incredibly sharp, clear images.

**Aperture Priority Auto Mode** allows for depth of field options while the camera selects the best shutter speed for optimal exposure.

**High Light Sensitivity up to ISO 3200** for sharper pictures in low light situations.

**Incredible, Bright 2.5 Inch LCD** for easy viewing and playback of pictures.

**Nikon In-Camera Red-Eye Fix™** automatically fixes most instances of red-eye.

**Nikon D-Lighting** automatically brightens the dark areas in the picture when in playback mode.

**Face-Priority AF** automatically finds a face and focuses on it for crisp, sharp portraits.

**16 Scene Modes** to guide you in taking better pictures, easily and automatically.

**Longer Battery Life** shoot approximately 250 images on a single charge of the included lithium-ion (Nikon EN-EL5) rechargeable battery.

**In-Camera Help button** instantly displays an explanation for all the functions within all menus.

**TV Quality Movie Mode** with sound at 30 frames per second.

**21MB Internal Memory** allows you to begin taking pictures immediately.





# COOLPIX® incredible digital



Built-in flash

3.5x Optical  
Zoom-Nikkor  
Glass Lens

Actual size P5000  
3.9" w x 2.5" h x 1.6" d  
(only 7.1oz.)



Incredible, Bright  
2.5" LCD Monitor for  
high visibility in daylight



Mode Dial

Command Dial

**10.0**  
Effective  
Megapixels

**3.5X**  
Optical  
Zoom - VR Nikkor  
Glass Lens

**2.5"**  
Incredible, Bright  
LCD Screen

**VR**  
Optical VR  
Image Stabilization

# COOLPIX P5000

## Digital Camera Specifications



**Better pictures  
in lower light**

**VR image  
stabilization**

**Simply better  
portraits**

<b>Effective pixels</b>	10.0 million
<b>Image sensor</b>	1/1.8-in. CCD; total pixels: approx. 10.37 million
<b>Lens</b>	3.5x Zoom-Nikkor; 7.5-26.3mm (35mm [135] format picture angle: 36-126mm); f/2.7-5.3; 7 elements in 6 groups; Digital zoom: up to 4x (35mm [135] format picture angle: 504mm)
<b>Focus range (from lens)</b>	1 ft. (30cm) to infinity (∞) [W], 2 ft. 4 in. (70cm) to infinity (∞) [T]; Macro close-up mode: 1.6 in. (4cm) to infinity (∞) [W], 1 ft. 4 in. (40cm) to infinity (∞) [T]
<b>Monitor</b>	2.5-in., 230,000-dot, wide viewing angle TFT LCD with anti-reflection coating
<b>Storage media</b>	Internal memory (approx. 21MB), SD memory cards
<b>Movie</b>	With sound: TV movie (640) at 30fps/15fps, Small size (320) at 15fps, Smaller size (160) at 15fps, Sepia (320) at 15fps, Monochromatic (320) at 15fps; Without sound: Time-lapse movie at 30fps
<b>Image size (pixels)</b>	3648 x 2736 (10M), 2592 x 1944 (5M), 2048 x 1536 (3M), 1600x1200 (2M), 1280 x 960 (1M), 1024x768 PC , 640x480 TV , 3648x2432(3 2), 3584 x 2016 (16:9)
<b>Vibration Reduction (VR)</b>	Optical lens shift VR Image Stabilization
<b>ISO sensitivity</b>	ISO 64, 100, 200, 400, 800, 1600, 2000, 3200, Auto (auto gain ISO 64-800)
<b>Built-in flash</b>	Range: (W) 1 ft. to 26 ft. 3 in. (0.3 to 8.0m), (T) 1 ft. to 13 ft. 1 in. (0.3 to 4.0m)
<b>Interface</b>	USB
<b>Languages</b>	Czech, Danish, German, English, Spanish, French, Indonesian, Italian, Dutch, Norwegian, Polish, Portuguese, Russian, Finnish, Swedish, Chinese (Simplified and Traditional), Japanese, Korean, Thai

<b>Power sources</b>	Rechargeable Li-ion Battery EN-EL5 (supplied), AC Adapter EH-62A (optional)
<b>Battery life</b>	Approx. 250 shots with EN-EL5 battery (based on CIPA standard)
<b>Dimensions (WxHxD)</b>	Approx. 3.9 x 2.5 x 1.6 in. (98 x 64.5 x 41 mm) excluding projections
<b>Weight</b>	Approx. 7.1 oz. (200 g) (without battery and SD memory card)
<b>Supplied accessories*</b>	USB Cable UC-E6, Audio Video Cable EG-CP14, Rechargeable Li-ion Battery EN-EL5, Battery Charger MH-61, Strap, PictureProject CD-ROM
<b>Optional accessories</b>	AC Adapter EH-62A, Wide-angle Converter WC-E67, Telephoto Converter TC-E3ED, Adapter Ring UR-E20, Leather Case, SB-400, SB-600, SB-800 Speedlights

\* Supplied accessories may differ by country or area.

### PictureProject System Requirements

<b>OS</b>	Macintosh: Mac OS X version 10.3.9, 10.4.x
<b>Windows</b>	Windows Vista (32bit), Windows XP Home Edition/Professional, Windows 2000 Professional pre-installed models
<b>Note</b>	CD-ROM drive required for installation. Only built-in USB ports are supported

Microsoft® and Windows® are either registered trademarks or trademarks of Microsoft Corporation in the United States and/or other countries. Macintosh® and QuickTime® are either registered trademarks or trademarks of Apple Computer Inc. in the United States and/or other countries. The SDHC logo is a trademark. PictBridge is a trademark. D-Lighting technology is provided by Apical Limited. Products and brand names are trademarks or registered trademarks of their respective companies. The FotoNation logo is a trademark.

Specifications and equipment are subject to change without any notice or obligation on the part of the manufacturer. February 2007 ©2007 NIKON CORPORATION



**Nikon Inc.,**  
1300 Walt Whitman Road, Melville, N.Y. 11747-3064 nikondigital.com / 1800-Nikon-UX