

COOLPIX.
incredible digital



At the heart of the image™

COOLPIX P60



Nikon
COOLPIX P60

- 8.1**
Effective
Megapixels
- 5X**
Optical
Zoom-NIKKOR
Glass Lens
- 2.5"**
Incredible,
Bright LCD
Screen
- VR**
Optical
Image
Stabilization
- 2000**
ISO
Capability



Nikon Inc.,
1300 Walt Whitman Road, Melville, N.Y. 11747-3064 nikonusa.com / 1800-Nikon-UX

CDP-P60TM-01-01/08 / 07-621

COOLPIX **PERFORMANCE**
passion made powerful



sharpening
the cutting edge
performance focused on the future

Nikon
COOLPIX P60

Key Features

- **8.1 megapixels** for beautiful prints up to 16x20 inches
- **5x zoom** for incredible sharp, clear images
- **Optical VR Image Stabilization**
- **Incredible, bright 2.5-inch** high resolution LCD monitor
- **ISO 2000 capability**
- **Electronic viewfinder**
- **Exposures modes (P/M)**
- **Nikon In-Camera Innovations**
 - **In-Camera Red-Eye Fix™** automatically fixes most instances of red-eye in the camera. You may never see red-eye again
 - **Improved Face-Priority AF** Nikon's face-finding technology that automatically focuses on faces faster than ever
 - **D-Lighting** rescues dark or backlit images by improving brightness and detail where needed

8.1 megapixel clarity with 5x zoom



An impressively high megapixel count delivers pictures with true-to-life color and pleasing details. What's more, it means images can be significantly enlarged, and still look absolutely stunning. The quality optics of a 5x Zoom-NIKKOR glass lens (36-180mm 35mm format equivalent) maximizes compositional freedom and image quality.

Optical VR image stabilization



without vibration reduction *with vibration reduction*

Nikon's optical VR optical image stabilization compensates for camera shake to produce clearer, sharper results in lower light or unsteady conditions. Active full time, VR's stabilizing effects also aid in smooth, easy framing and shooting.



ISO 2000 capability



Light sensitivity range up to ISO 2000 creates new opportunities to take sharper, more natural looking photos in lower light conditions, or to capture fast-moving subjects with outstanding clarity.



Practical shooting modes



Programmed Auto [P] and Manual [M] exposure modes for greater personal control over camera operation are accessible via the Mode dial, as well as a selection of 15 scene-optimized modes and five different movie modes.

AA-size batteries for shoot-anywhere convenience

Compatibility with AA-size batteries, which are widely available around the world, means carefree shooting virtually anywhere without worrying about recharging or running out of power.

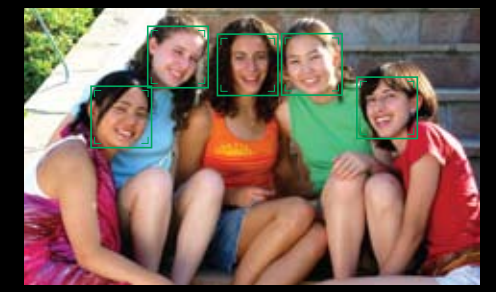
In-Camera Premium Features!



In-Camera Red-Eye Fix™
This in-camera feature automatically fixes most typical occurrences of red-eye.



D-Lighting
Compensates for underexposed images or insufficient flash by automatically adding light and detail to selected shots where needed, without affecting properly exposed areas.



Face-Priority AF
Automatically finds and focuses on up to 5 faces to ensure superb portraits with clear, crisp focus.



Simply better portraits