



COOLPIX S510

At the heart of the image™



COOLPIX[®] STYLE

brilliance made beautiful

8.1
Effective
Megapixels

3X
Optical
Zoom-Nikkor
Glass Lens

2.5"
Incredible,
Bright LCD
Screen

VR
Optical
Image
Stabilization

2000
ISO
Capability

Sculpted elegance meets startling speed.



Key Features

8.1 Megapixels for stunning prints as large as 16 x 20 inches

3x Optical Zoom-Nikkor Glass Lens – Nikkor optics provide exceptional pictures

VR Optical Image Stabilization minimizes the effect of camera shake

Incredible, Bright 2.5-inch High Resolution LCD makes it easy to compose and share your pictures

High Response – power-up within 0.7 seconds and shutter delay of only .005 seconds

Auto adjusts up to ISO 2000 – keep shooting, even in low light

All New Stylish, All Metal Design slips right into your shirt pocket or purse!

In-Camera Red-Eye Fix™ automatically fixes most instances of red-eye in the camera. You may never see red-eye again

Face-Priority AF – Nikon's face-finding technology that automatically focuses on up to 12 faces

D-Lighting rescues dark or backlit images by improving brightness and detail where needed

COOLPIX. STYLE

VR Optical Image Stabilization



without vibration reduction



with vibration reduction

Nikon's VR Optical Image Stabilization system compensates for camera shake to produce clearer, sharper results in lower light or unsteady conditions. Active full time, VR's stabilizing effects also aid in smooth, easy framing and shooting.



VR image stabilization

Quality, compact stainless steel body



From the solid feel and comfortable wraparound grip of its ultra compact stainless steel body to its large, easy-access control buttons and 2.5-inch high-resolution LCD monitor, the COOLPIX S510 is a joy to carry and to take pictures with

ISO 2000 Capability



Better pictures in lower light

Fast and Built-to-Last

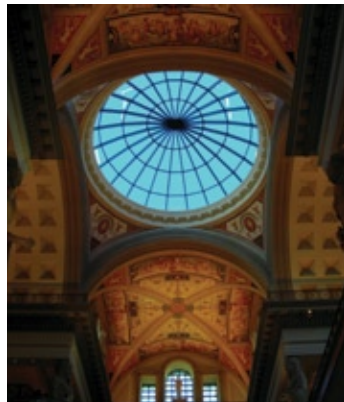
All functions are optimized for immediate response, freeing you to capture special moments as you experience them. The COOLPIX S510 powers up within 0.7 seconds, and the shutter releases in 0.005 seconds.

Light sensitivity range up to ISO 2000 with manual control or auto control (up to ISO 1000) creates new opportunities to take sharper, more natural looking photos in lower lighting conditions, or to capture fast-moving subjects with outstanding clarity.

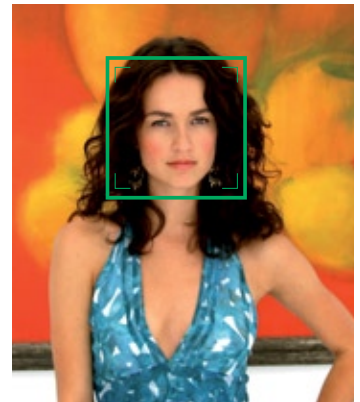
Nikon In-Camera Innovations Makes taking great pictures easy!



In-Camera Red-EyeFix™
This in-camera feature automatically fixes most typical occurrences of red-eye.



D-Lighting
Compensates for underexposed images or insufficient flash by automatically adding light and detail to selected shots where needed, without affecting properly exposed areas.



Face-Priority AF
Automatically finds and focuses on up to 12 faces to ensure superb portraits with clear, crisp focus.



Simply better portraits

COOLPIX S510

Digital Camera Specifications



Simply better
portraits



VR image
stabilization



Better pictures
in lower light

Effective pixels:	8.1 million
Image sensor:	1/2.5-in. CCD; total pixels: approx. 8.29 million
Lens:	3x Zoom-NIKKOR; 5.7-17.1mm (35mm [135] format picture angle: 35-105mm); f/2.8-4.7; 5 elements in 5 groups; Digital zoom: up to 4x (35mm [135] format picture angle: 420mm)
Focus range: (from lens)	50cm (1 ft. 7.7 in.) to infinity (∞), Macro close-up mode: 15cm (5.9 in.) to infinity (∞)
Monitor:	2.5-in., 230,000-dot, TFT LCD with wide viewing angle and anti-reflection coating.
Storage media:	Internal memory (approx. 52 MB), SD/SDHC memory card compatible
Image size: (pixels)	3246 x 2448 (High: 3264*/Normal: 3264), 2592 x 1944 (Normal:2592), 2048 x 1536 (Normal: 2048), 1024 x 768 (PC: 1024), 640 x 480 (TV: 640), 3200 x 1800 (16:9)
Vibration Reduction: (VR)	VR Optical Image Stabilization
ISO sensitivity:	ISO 64, 100, 200, 400, 800, 1600, 2000, Auto (auto gain ISO 64-1000)
Interface:	USB
Power sources:	Rechargeable Li-ion Battery EN-EL10 (supplied), AC Adapter EH-62D (optional)
Battery life:	Approx. 170 shots with EN-EL10 battery (based on CIPA standard)
Dimensions: (WxHxD)	Approx. 88 x 51 x 22 mm (3.5 x 2.0 x 0.9 in.) excluding projections
Weight:	Approx. 125 g (4.4 oz.) without battery and SD memory card
Supplied accessories*:	Rechargeable Li-ion Battery EN-EL10, Battery Charger MH-63, USB Cable UC-E6, Audio Video Cable EG-CP14, Strap, COOLPIX Software Suite CD-ROM
Optional accessories:	AC Adapter EH-62D

*Supplied accessories may differ by country or area.

System Requirements:

OS **Macintosh:** Mac OS X version 10.3.9, 10.4.x
Windows: WindowsVista (32bit), Windows XP Home Edition/Professional
pre-installed models

Note: CD-ROM drive required for installation. Only built-in USB ports
are supported

Microsoft®, Windows® and Windows Vista™ are either registered trademarks or trademarks of Microsoft Corporation in the United States and/or other countries. Macintosh®, Mac® OS and QuickTime® are either registered trademarks or trademarks of Apple Inc. in the United States and/or other countries. The SDHC logo is a trademark. ImageLink and ImageLink print system logo are trademarks of Eastman Kodak Company. PictBridge is a trademark. D-Lighting technology is provided by Apical Limited. The FotoNation logo is a trademark. The FotoConnect logo is a trademark. Products and brand names are trademarks or registered trademarks of their respective companies.

Specifications and equipment are subject to change without any notice or obligation on the part of the manufacturer. August 2007 ©2007 NIKON INC.



Nikon Inc.,
1300 Walt Whitman Road, Melville, N.Y. 11747-3064 nikonusa.com / 1800-Nikon-UX