



At the heart of the image™



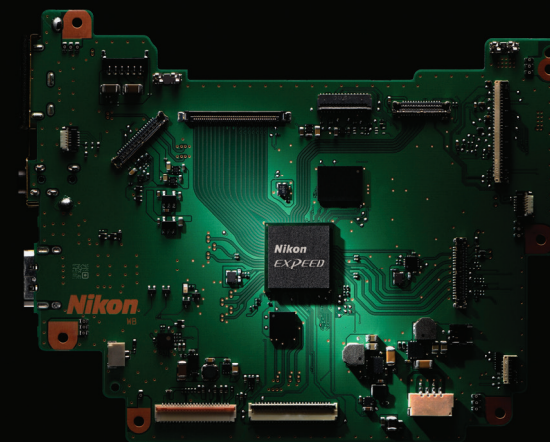
I AM VISION OUTPERFORMED

D5™ | D4s™ | D3s™
COMPARISON SHEET





EXPEED 5



Sensor & Resolution

D5

D4s

D3s

Sensor

35.9 x 23.9mm CMOS

36.0 x 23.9mm CMOS

36.0 x 23.9mm CMOS

Resolution

20.8MP FX-format
CMOS sensor
Anti-reflection coating is incorporated in various
components, minimizing ghost and flare

16.2MP FX-format
CMOS sensor

12.1MP FX-format
CMOS sensor
(4,256 x 2,832)

Image Quality

Image Processing Engine

EXPEED 5
Improved processing performance
ISO up to 102,400 and 3,280,000
New noise reduction system
25% more shots per charge (approx. 3780 CIPA)
Supports 4K/UHD 30p, 1080 60p

EXPEED 4
Increased number of shots (approx 3020 CIPA)
Higher video quality at high ISO
Supports 1080 60p

EXPEED

ISO Sensitivity Range

ISO 100 – 102,400
(ISO 50 - 3,280,000 equivalent)

100 to 25,600
(ISO 50 to 409,600 equivalent)

200-12,800
(ISO 100 to 102,400 equivalent)

File Format

12- or 14-bit NEF (Large RAW),
12-bit lossless compressed, compressed or
uncompressed for Medium/Small RAW, TIFF, JPEG, NEF
(RAW) + JPEG (L/M/S)

12- or 14-bit NEF (Large RAW),
12-bit lossless compressed, compressed,
or uncompressed, Small RAW,
TIFF, JPEG, NEF (RAW) + JPEG (L/M/S)

Compressed 12/14-bit NEF (RAW)
Compressed 12/14-bit NEF (RAW, Lossless
JPEG, TIFF (RGB)
Uncompressed 12/14-bit NEF (RAW)



Advanced Scene Recognition System

3D Color Matrix Metering

Advanced Scene Recognition System

White Balance: Keep White

D5™

180k-pixel RGB Sensor

Yes

Face-detection menu (On/Off [default setting]) added, watch area menu added

Auto 0: Keep White Added

More natural color reproduction is achieved by combining EXPEED 5 and auto white balance

D4s™

91k-pixel RGB Sensor

Yes

No

D3s™

1,005-pixel RGB Sensor

No
Scene Recognition System

No

High Speed Continuous Shooting

Frame Advance Rate

Buffer Capacity

12 fps with AF/AE: in any image quality or sensitivity
14 fps with fixed focus and exposure and Mirror UP

Up to 200 shots: When using XQD memory card
Lossless 12-bit or JPEG/Fine/Large or 14-bit lossless
compressed* JPEG/Fine/Large
1/250 sec or faster

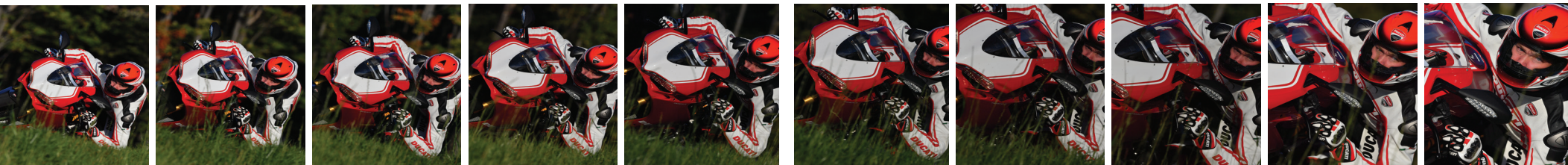
*When using Lexar Professional 2933x (2.0 card)

11 fps with AF/AE

Up to 133 shots: When using XQD memory card
Lossless 12-bit or JPEG/Fine/Large
1/250 sec or faster

9 fps with AF/AE

Up to 82 JPEG (Fine) or 36 14-bit NEF (RAW)
using CF card



D5 | D4s | D3s™
COMPARISON SHEET

nikonusa.com





Autofocus Detection and Acquisition

D5™

D4s™

D3s™

AF Sensor

Multi-CAM 20K
Phase Detect AF
153 AF Points
99 Cross Type Sensors
15 AF Sensors to f/8

Advanced Multi-CAM 3500FX
Phase Detect AF
51 AF Points
15 Cross Type AF Sensors

Multi-CAM 3500FX
Phase Detect AF
51 AF Points
15 Cross Type AF Sensors

Dedicated AF Processor

Yes

No

No

Minimum Brightness

EV -4 to EV +20
(ISO 100, 68°F/20°C)

EV -2 to EV +19
(ISO 100, 68°F/20°C)

EV -1 to EV +19
(ISO 100, 68°F/20°C)

AF Modes

Single-point
Dynamic Area 25 AF points
Dynamic Area 72 AF points
Dynamic Area 153 AF points
Group Area AF
3D-Tracking
Auto Area AF

Single-point
Dynamic Area 9 AF points
Dynamic Area 21 AF points
Dynamic Area 51 AF points
Group Area AF
3D-Tracking
Auto Area

Single-point
Dynamic Area 9 AF points
Dynamic Area 21 AF points
Dynamic Area 51 AF points
3D-Tracking

Focus Tracking with Lock On

2 Parameters
Subject Motion: Erratic/Steady
Blocked Shot Response: Quick/Slow

5 (Long)
4 and 3 (Normal)
2 and 1 (Short)

5 (Long)
4 and 3 (Normal)
2 and 1 (Short)

3D Tracking

3D Tracking: Face Detection (ON/OFF)
3D Tracking: Watch Area
(Wide/Narrow)

Yes

No

Contrast Detect AF

AF-S
AF-F
Focusing time (from half-pressing the shutter release button to the end of the focusing) is shortened up to approx. 50% compared with that of the D4S

AF-S
AF-F

AF-S
AF-F



Viewing	D5™	D4s™	D3s™
Viewfinder Frame Coverage	Frame coverage: Approx. 100%, magnification: approx. 0.72× Improved visibility during high-speed continuous shooting (shortened blackout time, reduced image blur)	Frame coverage: approx. 100%, magnification: approx. 0.7×	Frame coverage: approx. 100%, magnification: approx. 0.7×
LCD Monitor	3.2-in Approx. 2,359k-dot XGA: 403 ppi Touch screen for playback, text input	3.2-in Approx. 921k-dot VGA: 253 ppi	3.0-in Approx. 921k-dot VGA: 253 ppi
Touch Screen Function	Yes	No	No
Detachable Eyepiece Adapter	Yes Fluorine Coated for easier cleaning Compatible w/Nikon Rain Cover (optional)	No	No





Speedlight Control

Auto Flash ISO Sensitivity Control

Optical Control Advanced Wireless Lighting (AWL)

Radio Control Advanced Wireless Lighting (AWL)

D5™

Yes

Yes: Via Compatible Speedlight or Speedlight Commander SU-800

Up to 3 Groups: A/B/C
Up to 4 Channels

Yes: When using optional WR-R10/WR-A10 Wireless Remote Controller and SB-5000 Speedlight

Wireless remote control SB-5000 via radio control up to 98 feet

Up to 18 Radio Control Speedlights

Up to 6 Groups: A/B/C/D/E/F
Up to 3 Channels: 5/10/15

Can be mixed using optical system (SB-900 series, SB-800 series, SB-700, SB-600, SB-500) and Radio Control using SB-5000

Unified Flash Control using SB-5000 and Camera Control Pro 2 (version 2.23.0 or later) Remote setting possible using D5 Flash Control menu setting

D4s™

No

Yes: Via Compatible Speedlight or Speedlight Commander SU-800

Up to 3 Groups: A/B/C
Up to 4 Channels

No

D3s™

No

Yes: Via Compatible Speedlight or Speedlight Commander SU-800

Up to 3 Groups: A/B/C
Up to 4 Channels

No



Movie Features

D5™

D4s™

D3s™

Frame Size and Frame rate

4K/UHD: 3840 × 2160
30/25/24p
Full HD: 1920 × 1080 60/50/30/25/24p
(including 60p output to an external recorder
under limited conditions)

Full HD: 1920 × 1080 60/50/30/25/24p
(including 60p output to an external recorder
under limited conditions)

HD 1280 × 720 / 24 fps
VGA 640 × 424 / 24 fps
QVGA 320 × 216 / 24fps

Recorded in-camera to memory card

4K/UHD: Yes
1080p: Yes

1080p: Yes

720p: Yes

Multi-area mode Full HD D-Movie with three image area options

FX
DX: 1.5X
4K/UHD: 1.5X (dot-by-dot readout)
1920 × 1080 Crop: 3X

FX
DX: 1.5X
1920 × 1080: 2.7X (dot-dot readout)

FX

Simultaneous recording to memory card and external recorder

Yes

Yes

No

View simultaneous live view output and record uncompressed video via HDMI

Yes

Yes

No

Selectable audio frequency range

Yes
Wide/Voice

Yes
Wide/Voice

No

ISO range

100-3,280,000

200-25,600

200-6400

Save frame as a still frame

4K/UHD: 3840 × 2160 (approx. 8MP)

Full HD: 1920 × 1080 (approx. 5 MP)

Not Available

Flat Picture Control

Yes

No

No

Dedicated Movie Shooting Menu

Yes

No

No

Smooth Exposure Compensation

Yes

No

No

Highlight Display: Zebra Stripes

Yes

No

No

Power Aperture Control

Yes

Yes

No



Wired and Wireless Communication System

Wired LAN

Wireless

Transmission

D5™

1000 Base T Support
400 Mbps

Via WT-6A

130 Mbps

D4s™

1000 Base T Support
175 Mbps

Via WT-5A

30 Mbps

D3s™

Via WT-4A

Camera Handling and Operation

Dual memory card slots

Quick Settings

Fn Buttons

In-Camera Time-Lapse Movie Function

Interval timer

Battery

2 Models available:
XQD+XQD (G/S/H/N and Professional series supported)

CF+CF (compatible with UDMA 7)

Yes
Release mode setting can be changed quickly and intuitively with the release mode button (left hand) and command dial (right hand) while looking through the viewfinder

2 Front facing Fn buttons
1 Rear facing Fn button

Yes: Full HD & 4K UHD

Yes
Increased number of exposures (up to 9999), setting until one week later is possible

One EN-EL18a Rechargeable Li-Ion
Approx. 3,780 shots (in Single-frame mode, based on CIPA Standards)

CF+XQD

No

1 Front facing Fn button

Yes: Full HD

Yes
Increased number of exposures (up to 9999), setting until one week later is possible

One EN-EL18a Rechargeable Li-Ion
Approx. 3,020 shots (in Single-frame mode, based on CIPA Standards)

CF+CF

No

1 Front facing Fn button

No

Yes
Increased number of exposures (up to 999)

One EN-EL4a Rechargeable Li-Ion
Approx. 2,400 shots (in Single-frame mode, based on CIPA Standards)

D5™



I AM VISION OUTPERFORMED

Nikon Inc.
1300 Walt Whitman Road Melville, NY 11747-3064
www.nikonusa.com

