

# KeyMission™



SSION **I AM** ON A MISSION **I AM** ON A M



At the heart of the image™



# 360° action camera: push your story to the next level of immersion

Genuine waterproof and shockproof action camera that can capture seamless 360° video, free from blind areas. Visualize the entire world around you, in every direction, sharing the excitement of the experience in immersive detail. The tough, compact and lightweight body sets you free to follow your most adventurous instincts, wherever they may take you and whatever the shooting situation.



**New** KeyMission 360

360° FIELD-OF-VIEW	4K UHD VIDEO	Movie/Still	e-VR (app)	WATERPROOF 100ft	SHOCKPROOF 6.6ft	DUSTPROOF	FREEZEPROOF 14°F	Bluetooth®	Time-lapse movie	SUPER LAPSE MOVIE
Loop recording	KeyMission 360/170 Utility	SNAPBRIDGE 360/170	HEAD-MOUNTED DISPLAY	OPTIONAL ACCESSORIES						

**<Supplied accessories>**  
 EN-EL12 Rechargeable Li-ion battery, EH-73P Charging AC Adapter, UC-E21 USB Cable, AA-1A Base Adapter, AA-2 Base Mount (Flat), AA-3 Base Mount (Curved), CF-AA1 BK Silicone Jacket, AA-14A Lens Protector x2, AA-15A Underwater Lens Protector x2

• Data is recorded in 4K UHD (3840 × 2160) resolution, but the resolution of spherical videos when viewed differs depending on the type of display or display magnification.  
 • The camera may be unable to capture subjects within about 60 cm/2 ft from the camera's top, bottom, or sides because the subjects are outside the angle of view (i.e., the area visible in the frame). Point the lens toward important subjects when shooting.  
 • Under some shooting conditions, the boundaries of the composited areas may be misaligned.

KeyMission 360



Head-Mounted Display

## 360° movies give you the complete picture with Nikon image quality

**4K UHD** With the camera at the center, the 360° video function\*<sup>1</sup> shoots in all directions at the same time. Unprecedented visual expressions are realized by capturing the view in front of users' eyes, as well as scenes they cannot see — while even the user can be included in the 360° world. 4K UHD recording is possible, allowing the details to be rendered in high resolution.

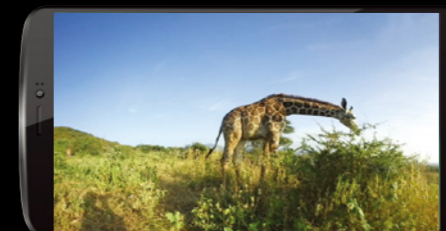
## Waterproof, shock-proof: ready for the toughest mission

Waterproof performance to a depth of 100 ft\*<sup>2</sup> without housing attached, this camera can truly capture the world. Shockproof up to a drop of 6 ft 6 in.\*<sup>3</sup>, the KeyMission 360 is ideal for use in rugged environments such as on mountain trails or when rock climbing. It also features strong dustproof performance\*<sup>4</sup>, preventing damage from fine dust and grit. Images can be taken without problems even in cold environments with temperatures down to 14°F\*<sup>5</sup>. This tough camera is an indispensable tool for adventures in severe environments.

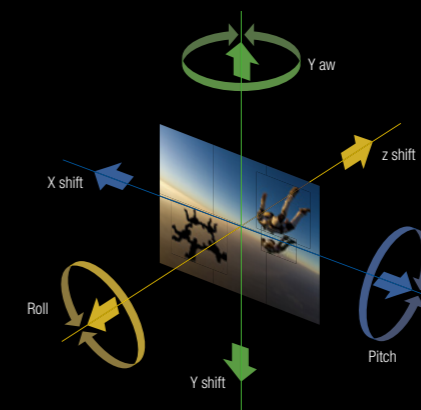


## Experiences captured in immersive detail

360° video can be played via Nikon's dedicated KeyMission 360/170 Utility and SnapBridge 360/170 applications\*<sup>6</sup>, which enable you to set up the camera, shoot remotely, play back images, change settings and more. The software's electronic Vibration Reduction function (e-VR) uses information recorded by the KeyMission 360 during shooting to calculate horizontal, vertical and rotational camera movements, allowing it to compensate for vibrations in the video.



Also, using the Head-Mounted Display, which allows you to look around a scene in a manner resembling virtual reality, you can step right into the image. By simply attaching your compatible smart device to the Head-Mounted Display, you can explore a 360° video as if you were right there in the scene, opening up a world of richly immersive experiences



## Action camera that can record real 360° video

An image sensor and lens are employed on two opposite sides of the camera, and images taken by each are combined in-camera to produce a single realistic, high-definition, 360° image. It can be attached to a wide range of mounting accessories, making it one with your head, wrist or surfboard to create video with an unparalleled sense of immersion.

\*<sup>1</sup> There are shooting ranges that cannot be captured underwater because the images are magnified compared to images captured on land. Therefore you cannot capture 360-degree images. When the underwater lens protectors are attached, there are black borders or bands in the images because the protectors appear in the images.  
 \*<sup>2</sup> JIS/IEC protection class 8 (IPX8) equivalent (under our testing conditions). Capacity to record images and movies underwater up to a depth of 30 m/100 ft and for 60 minutes. The camera can be used up to a water depth of about 20 m/65 ft when the lens protectors are attached.  
 \*<sup>3</sup> Cleared our testing conditions compliant with MIL-STD 810F Method 516.5-Shock. When the lens protectors or underwater lens protectors are attached.  
 \*<sup>4</sup> JIS/IEC protection class 6 (IP6X) equivalent (under our testing conditions).  
 \*<sup>5</sup> -10°C—+40°C (14°F—104°F) (for land use), 0°C—40°C (32°F—104°F) (for underwater use)  
 \*<sup>6</sup> The dedicated app "SnapBridge 360/170" is required to set up this camera, use remote photography, play back images, change settings, and more. Before setting up the camera, install the dedicated app on your smartphone or tablet. Wireless communication is not available when the camera is underwater.

Note: These tests do not guarantee that the camera will be free from damage or trouble under all conditions.



# 170° ultra-wide-angle 4K action camera: seize the moment

Waterproof, shockproof action camera that can capture 170° wide-angle and 4K video. Record sensational video, with a range of versatile functions available to maximize enjoyment. Easy to use, even for newcomers, your adventures can be recorded as dynamic and striking images with this small, wearable camera.



**New** KeyMission 170

<b>170°</b> FIELD-OF-VIEW	<b>4K</b> UHD VIDEO	<b>Movies/ Stills</b>	<b>e-VR</b>	<b>WATERPROOF</b> 33ft	<b>SHOCKPROOF</b> 6.6ft	<b>Dustproof</b>	<b>FREEZEPROOF</b> 14°F	<b>Bluetooth®</b>	<b>Time-lapse movie</b>	<b>SUPER LAPSE MOVIE</b>	
<b>Loop recording</b>	<b>KeyMission 360/170 Utility</b>	<b>SNAPBRIDGE</b> 360°/170°	<b>OPTIONAL ACCESSORIES</b>	<b>&lt;Supplied accessories&gt;</b> EN-EL12 Rechargeable Li-ion battery, EH-73P Charging AC Adapter, UC-E21 USB Cable, AA-1B Base Adapter, AA-2 Base Mount (Flat), AA-3 Base Mount (Curved), AA-14B Lens Protector, AA-15B Underwater Lens Protector, ML-L6 Remote Control (includes Remote Control Battery; 3V CR2032 lithium battery)							



## Dynamic, 170° ultra-wide-angle action video with e-VR

**4K UHD** 4K UHD movie capability enables you to record at a resolution four times higher than Full HD. Because fine details can be expressed in sharp, high resolution, you can achieve images that really draw you into their story.

Not only that, but the 170° ultra-wide-angle lens allows you to record the most dynamic, striking images. The excitement of adventures in the great, wide outdoors can be captured in all its glory. Helping the camera stand out from the competition, electronic Vibration Reduction (e-VR) is employed to reduce vibrations that occur during movie recording (except when 4K UHD/30p or 4K UHD/25p is selected), while a wind noise reduction function provides clear sound.

## Waterproof and shock-resistant: down to 33 ft without housing, 131 ft with housing.

With waterproof performance down to 33 ft\*<sup>1</sup>, for the camera body without housing you can enjoy shooting around water and marine sports. Shockproofing to a drop 6 ft 6 in.\*<sup>2</sup> protects your camera from shock in a variety of situations, such as on mountain paths or when rock climbing. The camera is also dustproof\*<sup>3</sup>, to a level that protects

against dust and grit when out in the field, and is capable of shooting in temperatures as low as 14°F\*<sup>4</sup> — making the KeyMission 170 a tough action camera for a range of adventure scenarios. Attaching the WP-AA1 Waterproof Case (optional) enables underwater shooting down to 131 ft\*<sup>5</sup>.

## Easy to use, even for first-time action shooters

Even if you're approaching an action camera for the first time, the KeyMission 170 enables you to take beautiful images, thanks to its intuitive interface and controls. Composition and newly taken images are easily confirmed by viewing the LCD monitor. The supplied ML-L6 Remote Control enables shooting even in the heat of the action or



while wearing gloves. This is a camera that takes you beyond the surface, into the heart of the adventure.

## Versatile shooting modes enhance the enjoyment of shooting

In addition to regular shooting, the KeyMission 170 offers a range of attractive shooting modes such as Add Slow Motion, and adding highlight tags during movie recording is possible. Also available are Superlapse movie, Loop recording and Time-lapse movie.

\*<sup>1</sup> JIS/IEC protection class 8 (IPX8) equivalent (under our testing conditions). Capacity to record images and movies underwater up to a depth of 10 m (33 ft) and for 60 minutes.

\*<sup>2</sup> Cleared our testing conditions compliant with MIL-STD 810F Method 516.5-Shock.

\*<sup>3</sup> JIS/IEC protection class 6 (IP6X) equivalent (under our testing conditions).

\*<sup>4</sup> -10°C—+40°C (14°F—104°F) (for land use), 0°C—40°C (32°F—104°F) (for underwater use) When the battery temperature is below 0°C (32°F), movies with the size/frame rate set to 2160/30p, 2160/25p, HS 1080/4x, or HS 720/8x cannot be recorded.

- If the battery temperature is below 0°C (32°F) before you start recording, the size/frame rate of the movie switches to 1080/30p or 1080/25p
- If the size/frame rate of the movie is set to 2160/30p, 2160/25p, HS 1080/4x, or HS 720/8x and the battery temperature drops to below 0°C (32°F) while recording, the camera stops recording and automatically turns off. The recorded movie is saved.

\*<sup>5</sup> The waterproof performance of the Waterproof Case WP-AA1 is equivalent to JIS/IEC waterproof grade 8 (IPX8). It is confirmed that water will not enter the waterproof case if held underwater at depths up to 40 m (131 ft) and for up to 30 minutes.

Note: These tests do not guarantee that the camera will be free from damage or trouble under all conditions.





# Rapid-fire action camera: record every moment

This wearable action camera enables quick shooting whenever the decisive moment strikes. Activated instantly and ready for shooting, it can record every moment without interrupting your enjoyment of the experience. It also supports SnapBridge, allowing you to share the excitement instantly and easily. Let your friends enjoy the moment along with you, wherever they are.



**New** KeyMission 80

<b>80°</b> FIELD-OF-VIEW	<b>WEARABLE</b>	<b>FRONT AND REAR LENSES</b>	<b>SINGLE-HANDED SHOOTING</b>	<b>Movies/ Stills</b>	<b>VR /e-VR</b>	<b>WATERPROOF</b> 3.3ft	<b>SHOCKPROOF</b> 5ft	<b>Dustproof</b>	<b>FREEZEPROOF</b> 14°F	<b>TOUCH CONTROL</b>
<b>Bluetooth®</b>	<b>Time-lapse movie</b>	<b>Route shooting</b>	<b>Self-portrait</b>	<b>Easy Panorama</b>	<b>SnapBridge support</b>	<b>&lt;Supplied accessories&gt;</b> EH-73P Charging AC Adapter, UC-E21 USB Cable, AA-4 Camera Holder				
<b>OPTIONAL ACCESSORIES</b>										

## Tough, wearable camera enables quick shooting<sup>\*1</sup> to record every moment of your experiences

The AA-4 Camera Holder is supplied so that the camera can be attached to a backpack. Detaching the camera from the holder switches the power on and allows quick shooting by touch panel operation. The camera's single-handed operability and small and lightweight body are indispensable features in situations where it is difficult to use a conventional camera or smart device, such as in the rain or places with an unstable foothold.

## Waterproof and shock-proof, for reliable performance even in adverse conditions

The KeyMission 80 features waterproof performance down to 3 ft 3 in.<sup>\*2</sup> and can be used at temperatures down to 14°F<sup>\*3</sup>, protecting it against inclement weather. Shockproof to a drop of 5 ft<sup>\*4</sup>, the camera is also protected from impacts, ensuring reliable shooting in outdoor situations such as when hiking along mountain paths. Meanwhile, dustproofing<sup>\*5</sup> seals the camera against dust and grit.



## Superb NIKKOR optical quality and Nikon imaging power

The KeyMission 80 features an exclusively designed, super-small NIKKOR lens. This compact lens enables high resolutions, to beautifully express details and textures in your subjects. The camera's image-processing power also allows you to obtain vivid, high-contrast landscape images.

## Camera for selfies

In addition to the main camera, the KeyMission 80 also employs a second camera with 4.9 million effective pixels for selfies, taken by viewing the LCD monitor. Take center stage with the whole wide landscape spread out around you.



\*1 When taking 12MP or 9 MP images, picture cannot be taken for a few seconds after turning the camera on. Wait for a few seconds before pressing the shutter button.  
 \*2 JIS/IEC protection class 7 (IPX7) equivalent (under our testing conditions). Capacity to shoot pictures underwater up to a depth of 1 m (3 ft 3 in.) and for 30 minutes. Not designed for underwater usage.  
 \*3 -10°C--+40°C (14°F-104°F)  
 \*4 Cleared our testing conditions compliant with MIL-STD 810F Method 516.5-Shock.  
 \*5 JIS/IEC protection class 6 (IP6X) equivalent (under our testing conditions).

Note: These tests do not guarantee that the camera will be free from damage or trouble under all conditions. When the camera's direction changes greatly, for example in a panning shot, the Vibration Reduction function is not activated.



**Route shooting records each adventure, every experience**

Route shooting mode records still images or movies as your experiences unfold. If you choose still images, the camera takes up to 100 stills within a specified shooting time. Alternatively, the function's movie mode automatically records 10 three-second movies within a specified period, combining them into a movie approximately 30 seconds long.

\*When taking still images in route shooting, image size is limited to 2MP.



**Ideal for a wide variety of outdoor scenarios**

Thanks to the quick-shooting capability of this wearable camera, it is perfect for a broad range of adventure scenarios such

as mountain climbing, trekking, fishing, camping and walking.

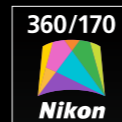
**SnapBridge connects your images with the world**

The KeyMission 80 supports Nikon SnapBridge, allowing the camera to be constantly connected via Bluetooth® to a compatible smart device\* with the SnapBridge application installed (available for free download). Images can be both automatically transferred to your smart device and uploaded to NIKON IMAGE SPACE letting you share your experiences with the world instantly.

\* Compatible iPhone®, iPad®, iPod touch®, or smart devices running on the Android™ operating system.



**KeyMission 360/170 Utility (for PC)**

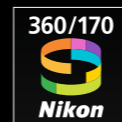


KeyMission 360/170 Utility is free software that enables you to transfer images and movies to your computer for viewing and editing. You can also use it to change the camera's settings.

To install it, download the latest version of the KeyMission 360/170 Utility installer from the website below and follow the on-screen instructions to complete installation.  
KeyMission 360/170 Utility:  
<http://downloadcenter.nikonimglib.com>

For system requirements and other information, check the Nikon website for your region.

**SnapBridge 360/170 (for compatible smart device)**



The SnapBridge 360/170 is an exclusive application for compatible smart devices, created for the KeyMission 360 and KeyMission 170. It enables you to transfer and view pictures from your camera, including 360° images, with your smart device. In addition, remote shooting, camera setting changes and image editing are all possible.

• Wireless communication is not available when the camera is underwater.

**The exciting image experience that SnapBridge offers...**



Automatic picture transfer from camera to smart device thanks to the constant connection between the two devices via Bluetooth® low energy (BLE) technology — making online photo sharing easier than ever

NIKON IMAGE SPACE



Free, unlimited upload of thumbnails to the cloud storage space NIKON IMAGE SPACE after registering for your Nikon ID

**A range of services that enriches your imaging life, including:**



• Camera remote control



• Automatic update of camera's time and location info

• Imprinting text, logos, etc. on pictures



• Receive camera's firmware updates

Note: • The Bluetooth® word mark and logos are registered trademarks owned by Bluetooth SIG, Inc. and any use of such marks by Nikon Corporation is under license. • Apple®, Apple logos, iPhone®, iPad®, iPod touch® and App Store® are trademarks of Apple Inc., registered in the U.S. and other countries. • Android™ and Google Play™ are trademarks of Google Inc.



## Mounting accessories

**AA-1A Base Adapter** (for KeyMission 360 and KeyMission 80)

**AA-1B Base Adapter** (for KeyMission 170)



Adapter that attaches your camera to a mount accessory. It can be attached to the camera's tripod socket. Ball-joint design enables adjustment of the camera angle freely.

**(AA-1A)**

- Dimensions (W × H × D): Approx. 2.8 × 2.1 × 1.9 in. (excluding camera screw)
- Weight: Approx. 1.4 oz
- Load capacity: Up to 10.5 oz.

**(AA-1B)**

- Dimensions (W × H × D): Approx. 2.5 × 2.2 × 1.9 in. (excluding camera screw)
- Weight: Approx. 1.6 oz.
- Load capacity: Up to 10.5 oz.

**AA-12 Base Mount Set** (3 Flat + 3 Curved)



A base mount set including both flat and curved types.

- Included items: AA-2 Base Mount (Flat) (×3), AA-3 Base Mount (Curved) (×3)

**[AA-2 Base Mount (Flat)]**

- Dimensions (W × H × D): Approx. 1.6 × 0.5 × 2.0 in. (excluding projections)
- Weight: Approx. 0.36 oz.

**[AA-3 Base Mount (Curved)]**

- Dimensions (W × H × D): Approx. 1.6 × 0.5 × 2.0 in. (excluding projections)
- Weight: Approx. 0.32 oz.



Camera body + Base Adapter

According to your purposes, various mounting accessories can be attached.

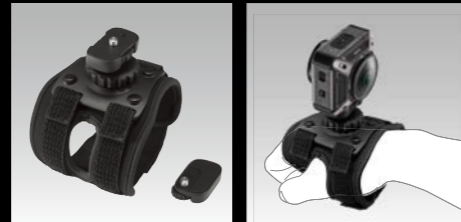
**AA-5 Vented Helmet Strap Mount**



Helmet mount that is exclusively made for cycling helmets with 2 or more rows of parallel vents. This product cannot be used with helmets without vents.

- Dimensions (W × H × D): Approx. 3.0 × 0.6 × 2.3 in.
- Weight: Approx. 1 oz.
- Band length: Approx. 11.9 in.

**AA-6 Wrist Mount**



Wrist-strap-type mount that can fix the camera to the wrist. It enables shooting during surfing or skiing.

(Wrist mount base dimensions)

- Dimensions (W × H × D): Approx. 3.6 × 1.7 × 2.6 in.
- Weight: Approx. 3 oz.
- Wrist circumference: Approx. 7.1-13.0 in.

(Tripod socket adapter)

- Dimensions (W × H × D): Approx. (1.9 × 0.5 × 1.1 in.
- Weight: Approx. 0.6 oz.

**AA-7 Handlebar Mount**



Handlebar mount that fixes the camera to the handlebars of a bicycle or motorbike. It can be attached to any handlebar with a diameter between 18 mm and 30 mm.

(Handlebar mount)

- Dimensions (W × H × D): Approx. 1.9 × 3.1 × 3.0 in.
- Weight: Approx. 2.5 oz.
- Compatible handlebar diameter: 0.8-1.2 in.

(Tripod socket adapter)

- Dimensions (W × H × D): Approx. 1.9 × 0.5 × 1.1 in.
- Weight: Approx. 0.6 oz.

**AA-11 Suction Cup Mount**



Suction cup mount that provides strong suction power.

- Dimensions (W × H × D): Approx. 3.2 × 2.0 × 4.2 in. (excluding detachment lip)
- Weight: Approx. 2.2 oz.
- Load capacity: Up to 12.3 oz.
- Suction disc dimensions (diameter): Approx. 3.2 in.
- Included items: Suction surface protection sheet × 1

**AA-8 Chest Mount**



Chest mount that fixes the camera to your chest. It enables handsfree shooting during sport activities.

Note: Be sure to secure the chest mount to your body before attaching the base adapter.

- Chest mount base dimensions (W × H × D): Approx. 4.5 × 4.8 × 1.4 in.
- Weight: Approx. 6.2 oz.
- Supported waist size: Approx. 23.7-49.5 in.

**AA-9 Surfboard Mount**



Surfboard mount that fixes the camera to a surfboard or snowboard. A strong adhesive tape is placed at the back of the plate. The supplied tether strap prevents dropping of the camera if it detaches from the mount.

Note: Once the surfboard base mount and tether strap holder have been removed from the surfboard, the adhesive force of the tape will diminish, and it cannot be reused. The surface may be damaged or the paint may peel off depending on the material to which the base mount is attached. Care should be taken when attaching the base mount.

- Included items: Surfboard base mount × 1, Tether strap holder × 1, Tether strap × 1, Locking plug × 1

(Surfboard base mount)

- Dimensions (W × H × D): Approx. 2.0 × 0.5 × 2.5 in. (excluding projections)
- Weight: Approx. 0.6 oz.

(Tether strap holder)

- Dimensions (W × H × D): Approx. 1.1 × 0.4 × 1.4 in.
- Weight: Approx. 0.16 oz.

**AA-10 Backpack Mount Clip**



Bag mount clip that attaches the camera to the shoulder strap of a backpack. Clip-type design enables one-touch attachment.

- Dimensions (W × H × D): Approx. 1.9 × 1.3 × 4.1 in.
- Weight: Approx. 2.3 oz.
- Clipping thickness: Up to 0.23 in.
- Load capacity: Up to 12.3 oz.

## Other accessories

**MP-AA1 Handy Grip**



Handy grip exclusively for action camera that prevents your body from being caught in the frame during handheld shooting, and reduces the load during long-duration shooting.

- Dimensions (W × H × D): Approx. 1.6 × 5.6 × 2.0 in.
- Weight: Approx. 2.2 oz.
- Included items: Strap × 1

**N-MP001 Extension Arm**



The Extension Arm prevents your body from being photographed in the frame during handheld shooting, and reduces the load during long-duration shooting. Can be adjusted to six lengths.

- Dimensions: 8.7 in. collapsed, 2 ft 4.9 in. fully extended.
- Weight: Approx. 6.6 oz.

**KeyMission Tripod**



Place your KeyMission camera in the middle of the moment and get hands-free video and stills. When using KeyMission 360, fold the legs in and the tripod can be used as a grip for the camera.

- Dimensions: 7 in. collapsed.
- Weight: Approx. 5 oz.
- Weight Capacity 5 lbs.

**KeyMission Extension Arm + Tripod**

Attach the Extension Arm to the KeyMission Tripod for a taller mount to see more of a scene.



**ML-L6 Remote Control**



Remote control that enables still-image shooting and movie recording with the press of a button even during action or while wearing gloves.

- Dimensions (W × H × D): Approx. 2.4 × 0.6 × 1.6 in. (excluding projections)
- Weight: Approx. 0.8 oz. (including battery)
- Included items: 3V CR2032 lithium battery

**AA-13 Wristband for Remote Controls**



Wristband that fixes the ML-L6 Remote Control to your wrist to ensure safe and comfortable action shooting.

**CF-AA1 Silicone Jacket**



Silicone jacket exclusively for the KeyMission 360. Silicone material protects the camera from scratches and dirt. Orange or black selectable.

- Dimensions (W × H × D): Approx. 2.8 × 2.7 × 1.8 in.
- Weight: Approx. 13.4 g (0.48 oz) Color: Black and orange

**WP-AA1 Waterproof Case**



Waterproof case that stores KeyMission 170 and enables underwater shooting to a depth of 40 m/131 ft for 30 minutes. Additional battery case is supplied. If you add a battery, it switches automatically to the camera's battery when power is exhausted.

\* The waterproof performance of the Waterproof Case WP-AA1 is equivalent to JIS/IEC waterproof grade 8 (IPX8). It is confirmed that water will not enter the waterproof case if held underwater at depths up to 40 m/131 ft for up to 30 minutes.

- Dimensions (W × H × D): Approx. 3.6 × 3.2 × 2.0 in.
- Weight: Approx. 4.7 oz. (excluding battery and camera)
- Included items: Additional battery case × 1

**AA-4 Camera Holder**



Camera holder that attaches the KeyMission 80 to the shoulder strap of a backpack, etc. Attachment belt that wraps around a shoulder strap is also included.

- Dimensions (W × H × D): 2.1 × 4.3 × 1.3 in.
- Weight: Approx. 1.1 oz.
- Included items: Attachment belt × 1

**KeyMission Soft System Case**



Easily carry your Accessory Pack components and other accessories as well as your KeyMission camera.

- Dimensions (W × H × D): Approx. 8.5 × 6 × 3.5 in.

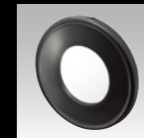
**ET-AA1 Tripod Adapter**



The tripod adapter that allows you to attach the camera to a tripod.

- Dimensions (W × H × D): Approx. 2.1 × 1.9 × 0.9 in.
- Weight: Approx. 0.7 oz.

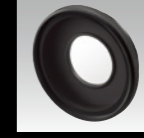
**AA-14A Lens Protector**



Lens protector exclusively for on-land use for the KeyMission 360 with protection glass. The camera is waterproof and can be used underwater down to approx. 20 m. However, the focusing cannot be achieved underwater. (It is attached when shipping from the factory.)

- Dimensions (diameter × depth): Approx. (1.7 × 0.5 in.)
- Weight: Approx. 0.18 oz.

**AA-15A Underwater Lens Protector**



Lens protector exclusively for underwater use for the KeyMission 360. Focusing can be achieved easily during underwater shooting. Can be used at water depths down to 30 m.

- Dimensions (diameter × depth): Approx. 2.0 × 0.6 in.
- Weight: Approx. 0.43 oz.

**AA-14B Lens Protector**



Lens protector exclusively for the KeyMission 170. Filter-type protector without protection glass prevents direct contact of objects with the lens. (It is attached when shipping from the factory.)

- Dimensions (diameter × depth): Approx. 1.5 × 0.5 in.
- Weight: Approx. 0.2 oz.

**AA-15B Underwater Lens Protector**



Lens protector exclusively for the KeyMission 170. Protection glass enables the capture of beautiful, sharply focused underwater images. Also protects lens in situations where bouncing grit might hit the camera.

- Dimensions (W × H × D): Approx. 2.1 × 1.6 × 0.6 in. (excluding projections)
- Weight: Approx. 0.71 oz.

**KeyMission Hard System Case**



Rugged hard case that can hold KeyMission cameras and accessories for easy transportation.

- Dimensions (W × H × D): Approx. 10.5 × 10 × 3.75 in.
- Weight: Approx. 2.14 lbs.

## Accessory compatibility chart

✓ : Optionally available  
 ✓ (supplied): Included and sold separately

	KeyMission 360	KeyMission 170	KeyMission 80
EH-73P Charging AC Adapter	✓ (supplied)	✓ (supplied)	✓ (supplied)
EH-62F AC Adapter	✓	✓	—
MH-65P Battery Charger	✓	✓	—
EN-EL12 Rechargeable Li-ion battery	✓ (supplied)	✓ (supplied)	—
UC-E21 USB Cable	✓ (supplied)	✓ (supplied)	✓ (supplied)
AA-1A Base Adapter	✓ (supplied)	—	✓ (requires ET-AA1 Tripod Adapter)
AA-1B Base Adapter	—	✓ (supplied)	—
AA-4 Camera Holder	—	—	✓ (supplied)
AA-5 Vented Helmet Strap Mount	✓	✓	—
AA-6 Wrist Mount	✓	✓	—
AA-7 Handlebar Mount	✓	✓	—
AA-8 Chest Mount	✓ (restrictions of use)*	✓	—
AA-9 Surfboard Mount	✓	✓	—
AA-10 Backpack Mount Clip	✓ (restrictions of use)*	✓	✓ (requires ET-AA1 Tripod Adapter and AA-1A Base Adapter)
AA-11 Suction Cup Mount	✓	✓	—
AA-12 Base Mount Set (3 Flat + 3 Curved)	✓	✓	—
AA-13 Wristband for Remote Controls	✓	✓	—
AA-14A Lens Protector	✓ (supplied)	—	—
AA-14B Lens Protector	—	✓ (supplied)	—
AA-15A Underwater Lens Protector	✓ (supplied)	—	—
AA-15B Underwater Lens Protector	—	✓ (supplied)	—
CF-AA1 Silicone Jacket (black/orange)	✓ (black supplied)	—	—
ET-AA1 Tripod Adapter	—	—	✓
ML-L6 Remote Control	✓	✓ (supplied)	—
MP-AA1 Handy Grip	✓	✓	—
WP-AA1 Waterproof Case	—	✓	—
N-MP001 Extension Arm	✓	✓	—
Tripod	✓	✓	—

\*The range blocked by the user becomes wider in images captured with this accessory attached.

## KeyMission 360 Major specifications



<b>Type</b>	Compact digital camera
<b>Number of effective pixels</b>	23.9 million (Image processing may reduce the number of effective pixels.)
<b>Image sensor</b>	1/2.3-in. type CMOS; approx. 21.14 million total pixels ×2
<b>Lens</b>	NIKKOR lens ×2
Focal length	1.6 mm (equivalent to 8.7 mm lens in 35mm [135] format)
f/-number	f/2
Construction	7 elements in 7 groups
<b>Focus</b>	Fixed focus
Focus range	Approx. 30 cm (1 ft) to ∞ from center of front surface of lens
<b>Storage</b>	
Media	microSD/microSDHC/microSDXC memory card
File system	DCF and Exif 2.3 compliant
File formats	Still images: JPEG Movies: MP4 (Video: H.264/MPEG-4 AVC, Audio: AAC stereo)
<b>Image size</b> (pixels)	<ul style="list-style-type: none"> <li>• 30 M 7744 × 3872</li> <li>• 7 M 3872 × 1936</li> </ul>
<b>Resolution/frame rate</b> (movie options)	<ul style="list-style-type: none"> <li>• When NTSC/PAL is set to NTSC 2160/24p, 1920/24p, 960/30p, 640/120p, 320/240p</li> <li>• When NTSC/PAL is set to PAL 2160/24p, 1920/24p, 960/25p, 640/100p, 320/200p</li> </ul>
<b>ISO sensitivity</b> (Standard output sensitivity)	ISO 100–1600
<b>Exposure</b>	
Metering mode	Matrix
Exposure control	Programmed auto exposure, exposure compensation (−2.0 – +2.0 EV in steps of 1/3 EV)
<b>Shutter</b>	CMOS electronic shutter
Speed	1/8000-1 s
<b>Self-timer</b>	Can be selected from 10 s and 2 s
<b>Interface</b>	
USB connector	Micro-USB connector (Do not use any USB cable other than the included UC-E21 USB Cable.), Hi-Speed USB
HDMI output connector	HDMI micro connector (Type D)
<b>Wi-Fi</b> (Wireless LAN)	
Standards	IEEE 802.11b/g (standard wireless LAN protocol)
Operating frequency	2412–2462 MHz (1–11 channels)
Authentication	Open system, WPA2-PSK

<b>Bluetooth</b>	
Communication protocols	Bluetooth Specification Version 4.1
<b>Power sources</b>	One EN-EL12 Rechargeable Li-ion Battery (included), EH-62F AC Adapter (available separately)
<b>Charging time</b>	Approx. 2 h 20 min (when using EH-73P/EH-73PCH Charging AC Adapter and when no charge remains)
<b>Battery life<sup>1</sup></b>	
Still images	Approx. 230 shots when using EN-EL12
Movie recording (actual battery life for recording)	Approx. 1 h 10 min when using EN-EL12
<b>Tripod socket</b>	1/4 (ISO 1222)
<b>Dimensions</b> (W × H × D)	Approx. 65.7 × 60.6 × 61.1 mm (2.6 × 2.4 × 2.5 in.) (including lens protectors)
<b>Weight</b>	Approx. 198 g (7 oz) (including lens protectors, battery and memory card)
<b>Operating environment</b>	
Temperature	−10°C to +40°C (14°F to 104°F) (for land use) 0°C to 40°C (32°F to 104°F) (for underwater use)
Humidity	85% or less (no condensation)
<b>Waterproof performance<sup>2</sup></b>	JIS/IEC protection class 8 (IPX8) equivalent (under our testing conditions) Capacity to record images and movies underwater up to a depth of 30 m (100 ft) and for 60 minutes
<b>Dustproof performance</b>	JIS/IEC protection class 6 (IP6X) equivalent (under our testing conditions)
<b>Shockproof performance<sup>3</sup></b>	Cleared our testing conditions <sup>4</sup> compliant with MIL-STD 810F Method 516.5-Shock

\* All measurements are performed in conformity with Camera and Imaging Products Association (CIPA) standards or guidelines.

<sup>1</sup> Battery life does not reflect the use of SnapBridge 360/170 and may vary with the conditions of use, including temperature, the interval between shots, and the length of time that menus and images are displayed.

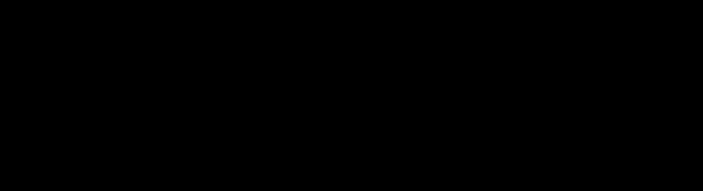
<sup>2</sup> The camera can be used up to a water depth of about 20 m (65 ft) when the lens protectors are attached.

<sup>3</sup> When the lens protectors or underwater lens protectors are attached.

<sup>4</sup> Dropped from a height of 200 cm (6 ft 6 in.) onto a surface of 5 cm (2 in.) thick plywood (changes in appearance, such as paint peeling off and deformation of the drop shock portion and waterproof performance are not subject to the test). These tests do not guarantee that the camera will be free from damage or trouble under all conditions.



## KeyMission 170 Major specifications



<b>Type</b>	Compact digital camera
<b>Number of effective pixels</b>	8.3 million
<b>Image sensor</b>	1/2.3-in. type CMOS; approx. 12.71 million total pixels
<b>Lens</b>	NIKKOR lens
Focal length	2.4 mm (equivalent to 15 mm lens in 35mm [135] format)
f/-number	f/2.8
Construction	7 elements in 5 groups
Angle of view	170 degrees
<b>Vibration reduction</b>	Electronic VR (movies)
<b>Focus</b>	Fixed focus
Focus range	Approx. 40 cm (1 ft 4 in.) to ∞ (distance measured from center of front surface of lens)
<b>Monitor</b>	3.7 cm (1.5-in.), approx. 345k-dot, TFT LCD
Frame coverage (shooting mode)	Approx. 97% horizontal and vertical (compared to actual picture)
Frame coverage (playback mode)	Approx. 99% horizontal and vertical (compared to actual picture)
<b>Storage</b>	
Media	microSD/microSDHC/microSDXC memory card
File system	DCF and Exif 2.3 compliant
File formats	Still images: JPEG Movies: MP4 (Video: H.264/MPEG-4 AVC, Audio: AAC stereo)
<b>Image size</b>	8M (3840 × 2160)
<b>Movie options</b>	
Normal speed movie options	When NTSC/PAL is set to NTSC <ul style="list-style-type: none"><li>2160/30p</li><li>1080/30p</li><li>1080/60p</li></ul> When NTSC/PAL is set to PAL <ul style="list-style-type: none"><li>2160/25p</li><li>1080/25p</li><li>1080/50p</li></ul>
HS movie options	HS 1080/4x HS 720/8x
<b>ISO sensitivity (Standard output sensitivity)</b>	ISO 100–1600
<b>Exposure</b>	
Metering mode	Matrix
Exposure control	Programmed auto exposure and exposure compensation (−2.0 – +2.0 EV in steps of 1/3 EV)
<b>Shutter</b>	CMOS electronic shutter
Speed	1/16000 to 1/2 s
<b>Interface</b>	
USB connector	Micro-USB connector (Do not use any USB cable other than the included UC-E21 USB Cable.), Hi-Speed USB <ul style="list-style-type: none"><li>Supports Direct Print (PictBridge)</li></ul>
HDMI connector	HDMI micro connector (Type D)

<b>Wi-Fi (Wireless LAN)</b>	
Standards	IEEE 802.11b/g (standard wireless LAN protocol)
Operating frequency	2412–2462 MHz (1–11 channels)
Authentication	Open system, WPA2-PSK

<b>Bluetooth</b>	
Communication protocols	Bluetooth Specification Version 4.1

**Supported languages** Chinese (Simplified and Traditional), Dutch, English, French, German, Italian, Japanese, Korean, Russian, Spanish

**Power sources** One EN-EL12 Rechargeable Li-ion Battery (included)  
EH-62F AC Adapter (available separately)

**Charging time** Approx. 3 h (when using EH-73P/EH-73PCH Charging AC Adapter and when no charge remains)

<b>Battery life</b> <sup>1</sup>	
Still images	Approx. 250 shots when using EN-EL12
Movie recording (actual battery life for recording) <sup>2</sup>	Approx. 60 min when using EN-EL12

**Tripod socket** 1/4 (ISO 1222)

**Dimensions (W × H × D)** Approx. 66.4 × 46.8 × 42.7 mm (2.7 × 1.9 × 1.7 in.) (including lens protector, excluding projections)

**Weight** Approx. 134.5 g (4.8 oz.) (including lens protector, battery, and memory card)

<b>Operating environment</b>	
Temperature	−10°C to +40°C (14°F to 104°F) (for land use), 0°C to 40°C (32°F to 104°F) (for underwater use)
Humidity	85% or less (no condensation)

**Waterproof performance** JIS/IEC protection class 8 (IPX8) equivalent (under our testing conditions)  
Capacity to record images and movies underwater up to a depth of 10 m (33 ft) and for 60 minutes

**Dustproof performance** JIS/IEC protection class 6 (IP6X) equivalent (under our testing conditions)

**Shockproof performance** Cleared our testing conditions<sup>3</sup> compliant with MIL-STD 810F Method 516.5-Shock

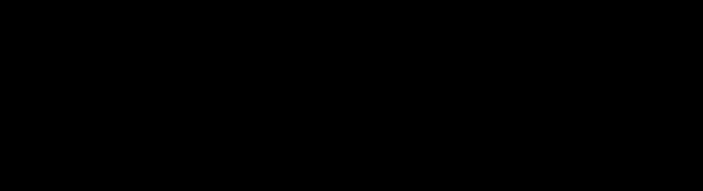
<sup>•</sup> Unless otherwise stated, all figures assume a fully-charged battery and an ambient temperature of 23±3°C (73.4 ±5.4°F) as specified by the Camera and Imaging Products Association (CIPA).

<sup>1</sup> Battery life does not reflect the use of SnapBridge and may vary with the conditions of use, including temperature, the interval between shots, and the length of time that menus and images are displayed.

<sup>2</sup> The remaining movie recording time (the amount of time that can be recorded for an individual movie) displayed at the top of the shooting screen depends on the remaining amount of space on the memory card. Recording may end before this limit is reached if the camera temperature becomes elevated.

<sup>3</sup> Dropped from a height of 200 cm (6 ft 6 in.) onto a surface of 5 cm (2 in.) thick plywood (changes in appearance, such as paint peeling off and deformation of the drop shock portion and waterproof performance are not subject to the test). These tests do not guarantee that the camera will be free from damage or trouble under all conditions.

## KeyMission 80 Major specifications



<b>Type</b>	Compact digital camera
<b>Number of effective pixels</b>	Camera 1 (main camera): 12.4 million Camera 2 (camera for selfies): 4.9 million
<b>Image sensor</b>	Camera 1: 1/2.3-in. type CMOS; approx. 12.71 million total pixels Camera 2: 1/5-in. type CMOS; approx. 5.65 million total pixels
<b>Lens</b>	NIKKOR lens

Focal length (angle of view in 35mm [135] format)	Camera 1: 4.5 mm (equivalent to that of 25 mm lens) Camera 2: 1.8 mm (equivalent to that of 22 mm lens)
f/-number	Camera 1: f/2 Camera 2: f/2.2
Construction	Camera 1: 6 elements in 6 groups Camera 2: 4 elements in 4 groups

**Vibration reduction** Camera 1: Lens shift (still images)<sup>1</sup>  
Combination of lens shift and electronic VR (movies)  
Camera 2: Electronic VR (movies)

**Focus** Camera 1: Contrast-detect AF<sup>2</sup>  
Camera 2: Fixed focus

Focus range	Camera 1: Approx. 10 cm (4 in.) to ∞ Camera 2: Approx. 35 cm (1 ft 2 in.) to ∞ (All distances measured from center of front surface of the lens)
Focus-area selection	Camera 1: Center Camera 2: –

**Monitor** 4.4 cm (1.7-in.), approx. 230k-dot, TFT LCD (touchscreen) with 5-level brightness adjustment

Frame coverage (shooting mode) Approx. 100% horizontal and vertical (compared to actual picture)

Frame coverage (playback mode) Approx. 100% horizontal and vertical (compared to actual picture)

<b>Storage</b>	
Media	microSD/microSDHC/microSDXC memory card
File system	DCF and Exif 2.3 compliant
File formats	Still images: JPEG Movies: MP4 (Video: H.264/MPEG-4 AVC, Audio: AAC stereo)

**Image size (pixels)**

Camera 1:

- 4:3 (12 M) (3968 × 2976)
- 4:3 (2 M) (1920 × 1440)<sup>3</sup>
- 16:9 (9 M) (3968 × 2232)
- 16:9 (2 M) (1920 × 1080)<sup>3</sup>
- 1:1 (9 M) (2976 × 2976)
- 1:1 (2 M) (1440 × 1440)<sup>3</sup>

Camera 2:

- 4:3 (5 M) (2528 × 1896)

**ISO sensitivity (Standard output sensitivity)** Camera 1: ISO 64 – 1600  
Camera 2: ISO 64 – 800

<b>Exposure</b>	
Metering mode	Matrix
Exposure control	Programmed auto exposure, exposure compensation (−2.0 – +2.0 EV in steps of 1/3 EV)

**Shutter** CMOS electronic shutter

Speed 1/6400 – 1 s

<b>Interface</b>	
USB connector	Micro-USB connector (Do not use any USB cable other than the included UC-E21 USB Cable.), Hi-Speed USB

<b>Wi-Fi (Wireless LAN)</b>	
Standards	IEEE 802.11b/g (standard wireless LAN protocol)
Operating frequency	2412–2462 MHz (1–11 channels)
Authentication	Open system, WPA2-PSK

<b>Bluetooth</b>	
Communication protocols	Bluetooth Specification Version 4.1

**Supported languages** Chinese (Simplified and Traditional), Dutch, English, French, German, Italian, Japanese, Korean, Russian, Spanish

**Power sources** Rechargeable lithium-ion battery (built-in)

**Charging time** Approx. 2 h 30 min (when using EH-73P/EH-73PCH Charging AC Adapter and when no charge remains)

<b>Battery life</b> <sup>4</sup>	
Still images	Approx. 220 shots when using the built-in rechargeable battery
Movie recording (actual battery life for recording) <sup>5</sup>	Approx. 40 min when using the built-in rechargeable battery

**LED light** Built-in

**Dimensions (W × H × D)** Approx. 44.8 × 86.5 × 15.0 mm (1.8 × 3.5 × 0.6 in.) (excluding projections)

**Weight** Approx. 74 g (2.7 oz.) (including built-in rechargeable battery and memory card)

<b>Operating environment</b>	
Temperature	−10°C to +40°C (14°F to 104°F)
Humidity	85% or less (no condensation)

**Waterproof** JIS/IEC protection class 7 (IPX7) equivalent (under our testing conditions)  
Prevents water from entering the camera underwater up to 30 minutes at a depth of 1 m (3 ft 3 in.)

**Dustproof** JIS/IEC protection class 6 (IP6X) equivalent (under our testing conditions)

**Shockproof** Cleared our testing conditions<sup>6</sup> compliant with MIL-STD 810F Method 516.5-Shock

<sup>•</sup> All measurements are performed in conformity with Camera and Imaging Products Association (CIPA) standards or guidelines.

<sup>1</sup> Vibration reduction is disabled when using Still images in route shooting.

<sup>2</sup> The camera shoots at a fixed focus when using Still images in route shooting.

<sup>3</sup> When using Still images in route shooting.

<sup>4</sup> Battery life does not reflect the use of SnapBridge and may vary with the conditions of use, including temperature, the interval between shots, and the length of time that menus and images are displayed.

<sup>5</sup> Individual movie files cannot exceed 4 GB in size or 29 minutes in length. Recording may end before this limit is reached if camera temperature becomes elevated.

<sup>6</sup> Dropped from a height of 150 cm (5 ft) onto a surface of 5 cm (2 in.) thick plywood (changes in appearance, such as paint peeling off and deformation of the drop shock portion and waterproof performance are not subject to the test). These tests do not guarantee that the camera will be free from damage or trouble under all conditions.



The KeyMission 360 may be unable to capture subjects within about 60 cm/2 ft from the camera's top, bottom or sides because the subjects are outside the angle of view (i.e., the area visible in the frame). Point the lens toward important subjects when shooting. Under some shooting conditions, the boundaries of the composited areas may be misaligned.

Since KeyMission 360 doesn't have a monitor, the dedicated app "SnapBridge 360/170" is required to set up this camera, use remote photography, play back images, change settings and more. Before setting up the camera, install the dedicated app on your smartphone or tablet. Wireless communication is not available when the camera is underwater.

For KeyMission Waterproof/Shockproof/Freezeproof limitations please visit [www.nikonusa.com/keymission360info](http://www.nikonusa.com/keymission360info)

### Sharing Compatibility

The Nikon Snapbridge 360/170 application must be installed on a compatible smart device before it can be used with this camera.

Snapbridge 360/170 App Requirements:

Android 5.0 or later or 6.0.1 or later.

iOS 8.3 or later, iOS 9.1 or later (latest version is recommended)

A device with Bluetooth 4.0 or later (i.e. a device that supports Bluetooth Smart Ready/Low Energy) is required.




For more information regarding Nikon SnapBridge functionality, please visit [www.nikonusa.com/en/nikon-products/snapbridge-app\\_page](http://www.nikonusa.com/en/nikon-products/snapbridge-app_page)  
Apple, the Apple logo, iPhone, iPad and iPod touch are trademarks of Apple, Inc., registered in the U.S. and other countries. App Store is a service mark of Apple Inc.  
Android and Google Play are trademarks of Google Inc.

All Nikon trademarks are trademarks of the Nikon Corporation

The Bluetooth wordmark and logos are registered trademarks owned by the Bluetooth SIG, Inc. and any use of such marks by Nikon Corporation and its Affiliates is under license.

Specifications and equipment are subject to change without any notice or obligation on the part of the manufacturer. September 2016 ©2016 Nikon Inc.

	<b>WARNING</b>	<b>TO ENSURE CORRECT USAGE, READ MANUALS CAREFULLY BEFORE USING YOUR EQUIPMENT.</b>
---	----------------	---



Nikon Inc. 1300 Walt Whitman Road, Melville, N.Y. 11747-3064, U.S.A. [www.nikonusa.com](http://www.nikonusa.com)